

Add: 20#, Shui Tian Road, Tong Le Community,
Long Gang District, Shenzhen, China. Zip Code: 518116
Tel: +86-0755-84893637 Fax: +86-0755-28072766
Mail: locstar@locstar.com Website: <http://www.locstar.com>

SMART LOCK CATALOGUE



Welcome to Locstar Technology company.

Locstar founded since 1998, we have been in smart lock industry for more than 20 years, we are original OEM/ODM manufacture, we offer both products and solutions to hotels, apartment, offices, facilities and leisure facilities at domestic and oversea market with goods Compatibility by our PMS interface with Opera Fidelio and other popular PMS..

Locstar is located at LongGang, Shenzhen with 10,000M² production base. We wish to produce the most reliable lock to clients, and with this wish, we have developed a complete and mature production line, including the R&D, molding, punching, dieing, assembling testing and logistics.

Allied with 300 intelligent employees, and our department of R&D, production, marketing and after-sale center, we can secure customer and overall satisfaction purchase experience.

Our products and systems are widely used in guesthouses, hotels, flats and office intelligent estates, and the quality and service of our firm are widely acknowledged by our users. For dependable and safety performance with low cost, LOCSTAR series of products are very popular with domestic markets. Especially, our locks pass ISO, BHMA, SIRIM, CE, FCC, SASO, SONCAP certificates, and have been exported to the worldwide countries for many years. We may say should you favor us with inquiries for specific requirements (such as detailed types, quantity, and destination). We are in a position to supply you with the first class products at competitive price.

You can trust on us, Sincerely look forward to win-win cooperation with your!



CERTIFICATE



IECQ



ISO 9001



ISO 14001



ISO 45001



UL



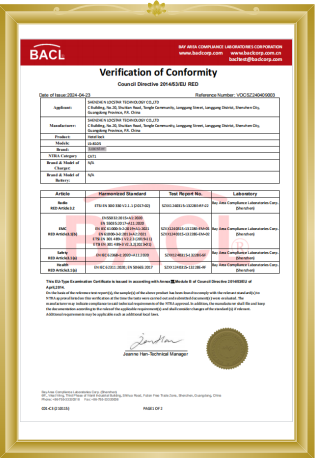
FCC



RoHS



CE-RED



CE-LVD



CE-VOC

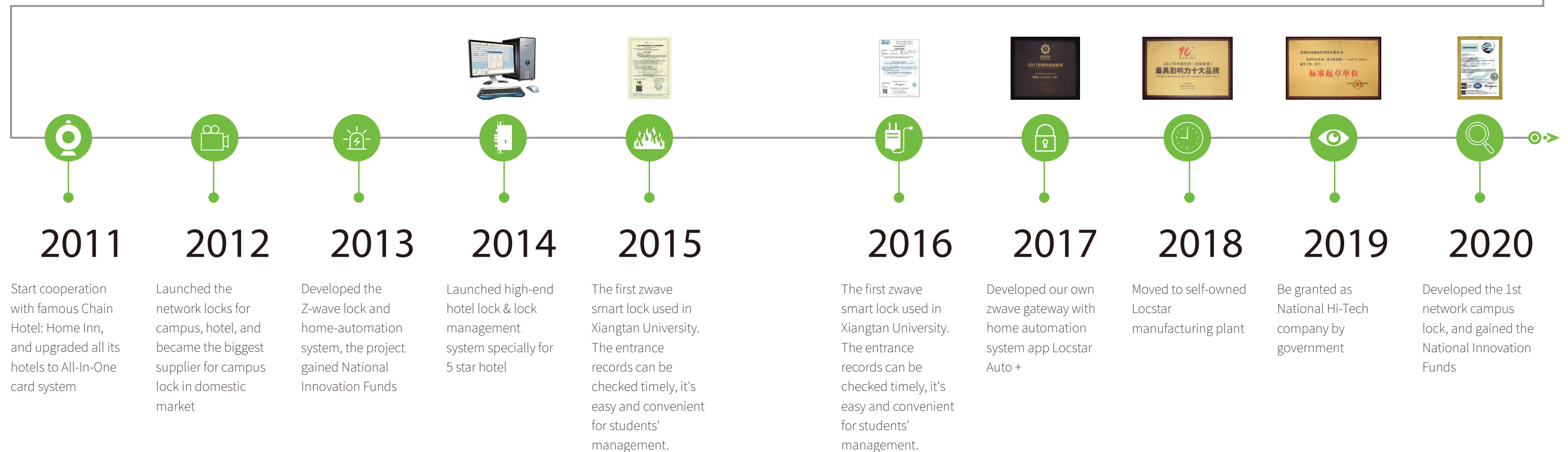
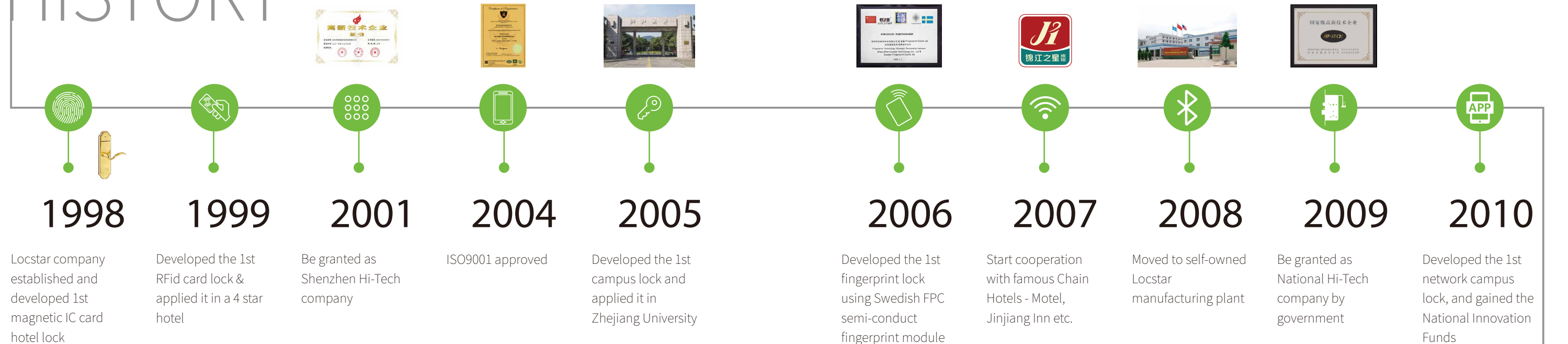


IP65



Z-Wave

HISTORY



HOME SMART LOCK

Your smart phone is
now your key.



TTLock APP



TTHotel APP



Fingerprint



Card



Password



Key



WiFi



Bluetooth



APP



TUYA LOCK SYSTEM

Gateway Zigbee /Wifi for different scenes



TuyaSmart or Smart Life app is free and features APP, convenient control, abundant scenarios, powerful functions, and global applicability. The app is compatible with different smart device types and brands. It has Android and iOS versions for you to control home appliances remotely.

Easily network matching: With the leading-edge Pegasus connection technology, the TuyaSmart or Smart Life app can automatically detect new devices and quickly pair with them.

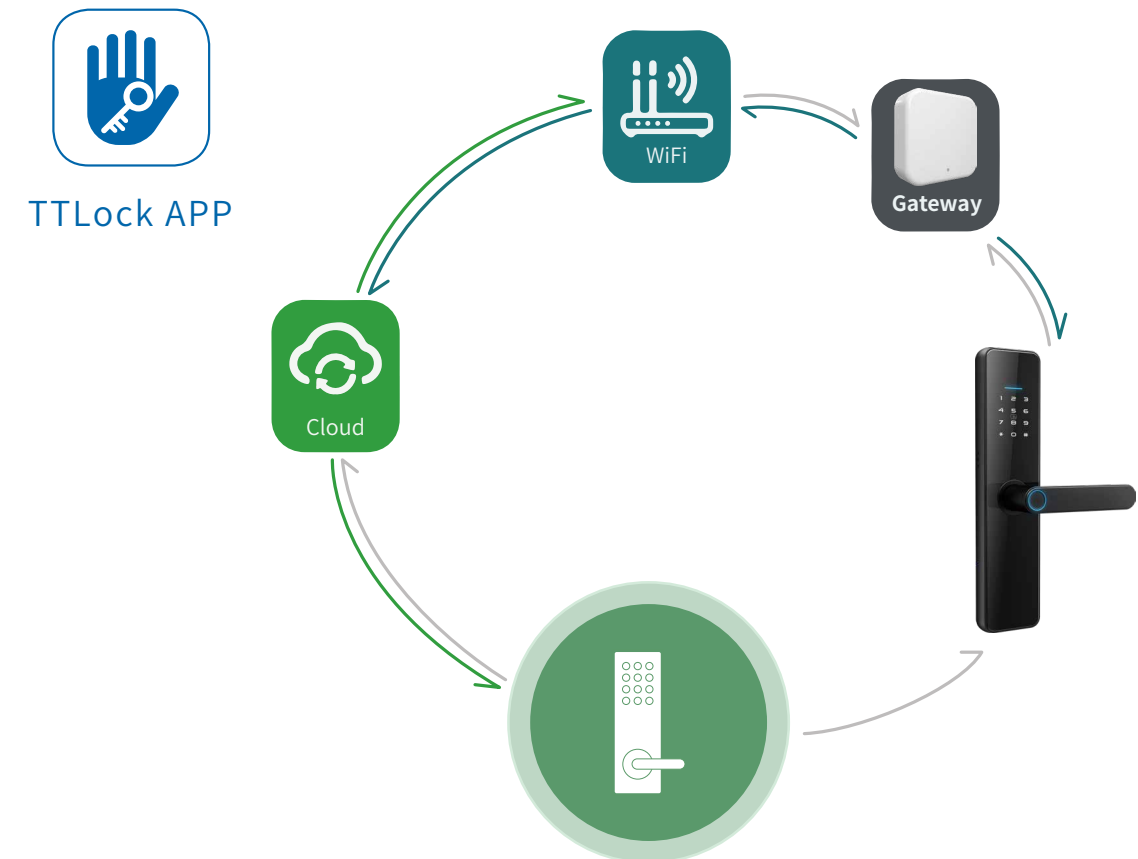
Convinient to work with other tuyu home smart device- It supports one-tap execution of combined automation smart scenes, and linkage between scenes and devices to enable interactions and interconnections between products.

Support Amazon Alexa / Google home:It allows users to use third-party platforms such as Amazon Echo and Google Home to voice control devices. Permission management and device sharing ensure security.

To sum up, the TuyaSmart or Smart Life app enables global users to easily control smart devices and learn home appliance status in real time.

TTLOCK SYSTEM

Gateway Bluetooth for different scenes



TT Lock App is a management software for smart lock . This APP can be used to manage various types of smart locks, including door locks, parking locks, safe locks, bicycle locks, and so on. The App and the lock communicate via Bluetooth to unlock, lock, hardware upgrade, read operation record, etc. on the App. The Bluetooth key can also help open the door lock through the AI watch.Currently, the App supports Simplified Chinese, Traditional Chinese, English, Spanish, French, German, Italian, Russian, Portuguese, Serbian, Malay, Japanese, Vietnamese.

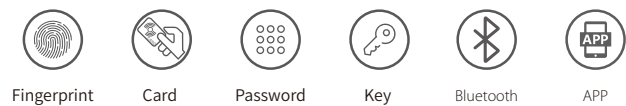
Unlimited eKeys: Grant or Revoke Access with our Patented Online Cloud based eKeys. eKeys can be Time/Period Based, Permanent, One Time, Cyclic or Customised.

Convinient Password : Grant Access via Intelligent Passcodes from Anywhere in the World in Realtime without the need of Internet/WiFi/GSM, Passcodes can be Time Based, Cyclic, One Time, Permanent or Customised.

Free Checking Record by APP: Review Access Logs in Chronological order, Receive UNLOCK Notifications instantly.

Multiple Unlocking: Manage eKeys, Passcodes, Fingerprints, IC Cards all from within our APP.

|| Moudle No.: LS-C87



Colour:



Silver



Black

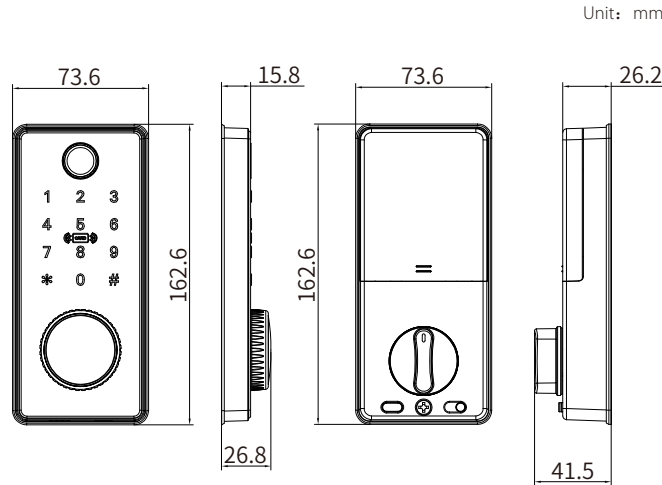
Technical parameter

- 6 ways to unlock: TTLOCK BLE APP, Fingerprint, Pass Code, Card, Mechanical Key Unlock;
- Convenient APP management system, you can manage your smart lock anytime and anywhere;
- You can manage a large number of locks with just one phone;
- Multi-level administrator settings to help you better manage your smart buildings;
- Query unlock records anytime and anywhere, the first time to know your home security;
- The compact size fits all wooden doors and metal doors;
- FPC fingerprint reader gives you the best security experience ;
- Emergency powersupply in case of lost power;
- We can customize production according to your requirements,OEM/ODM;

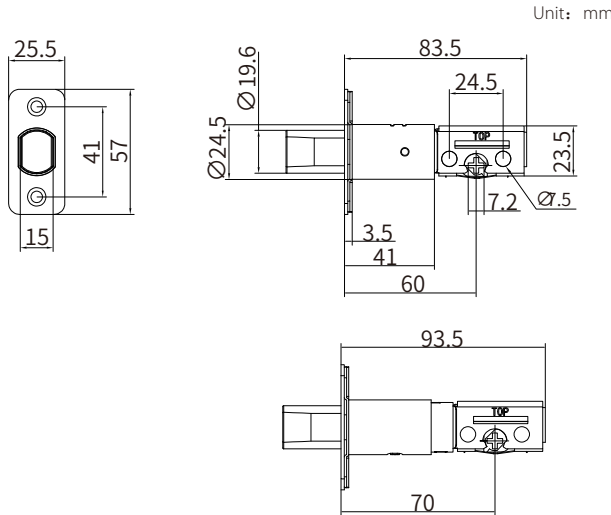
Technical parameter

Bluetooth standard	Bluetooth 4.1ble	Key type	Capacitive touch button
Supported mobile phone	Android 4.3 / IOS 7.0 or above	IC cards Capacity	Mifare M1 card 200
Power supply mode	4 alkaline dry batteries	Unlocking Ways	App, password, fingerprint, IC card, mechanical key
Low voltage alarm	4.8V	Fingerprint head type	Semiconductor fingerprint head
Voltage range	4.5~6V	Fingerprint capacity	120 pieces
Standby current	65 microamps	FAR	<0.001%
Working current	Less than 200 Ma	FRR	<1.0%
Unlocking time	≈ 1.5 seconds	Passwords Capacity	Custom and permanent password 150
Operating temperature	-20 ~ 70 ° C		Other dynamic passwords 150

Panel measurement



Mortise measurement



|| Moudle No.: LS-C88



Colour:



● Brown



● Black

Technical parameter

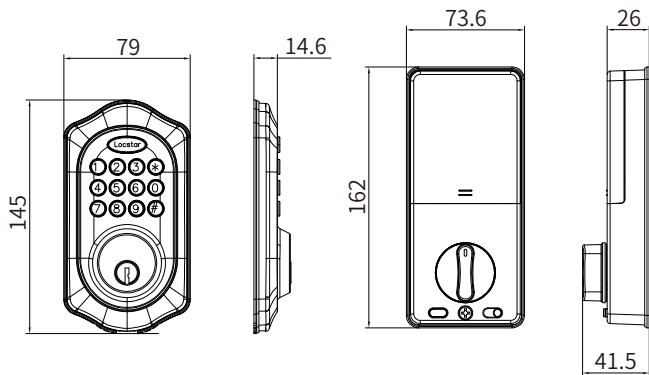
- Access by APP, Pass code, Mechanical Key Unlock
- TUYA BLE App version and offline version available to choose.
- Strong and secure Aluminum alloy lock panel, Anti-corrosion and study.
- Emergency powersupply in case of lost power;
- We can customize production according to your requirements,OEM/ODM;

Technical parameter

Bluetooth standard	Bluetooth 4.1ble	Voltage range	4.5~6V
Supported mobile phone	Android 4.3 / IOS 7.0 or above	Standby current	65 microamps
Power supply mode	4 alkaline dry batteries	Key type	Capacitive touch button
Working current	Less than 200 Ma	Unlocking Ways	App, password, mechanical key
Unlocking time	≈ 1.5 seconds	Passwords Capacity	Password 150
Operating temperature	-20 ~ 70 ° C		Temporary passwords 50
Low voltage alarm	4.8V		

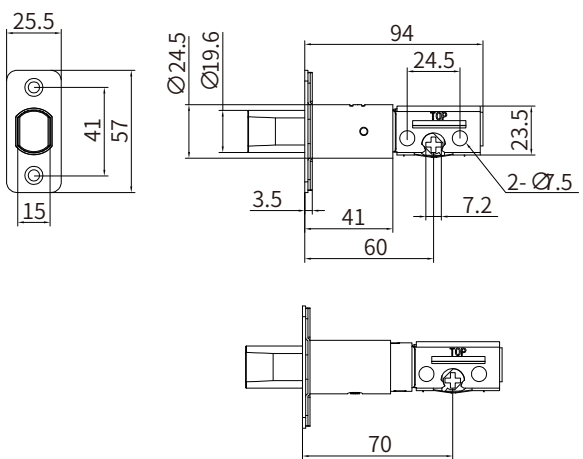
Panel measurement

Unit: mm



Mortise measurement

Unit: mm



Moudle No.: LS-C90A



Fingerprint



Password



Key



Colour:



● Black

Technical parameter

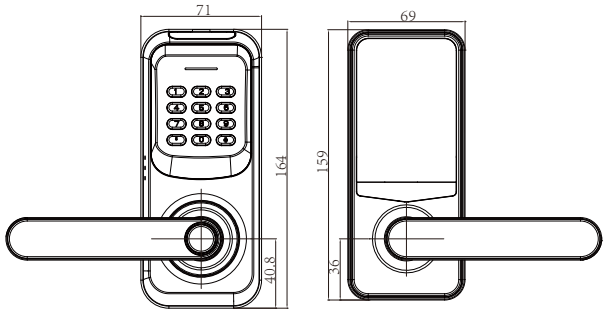
- **【Multiple unlock ways】**: App+Fingerprint+Password+Card+Manual key, WiFi remote control (requires additional gateway device).
- **【CNC procession】**: High quality end just like the phone production requirment, one by one CNC procession, not by mould batch production.
- **【Durability and stability】**: Intelligent door lock has low power alarm function. the door lock has an emergency charging port (Micro-USB),
- **【Smart Home Access】**: Send eKeys to friends or family, manage your smartphone's to view your access history.
- **【Virtual password】**: it easy to enter your password in the dark, while voyeuristic virtual passwords help protect the privacy of access codes.
- **【Multiple application】**: replaces the standard single cylinder American door lock and fits right and left doors, perfect for working in different environments in individual homes, rentals, co-op Spaces, offices or stores.

Technical parameter

Power supply mode	4AA alkaline dry batteries	Key type	Silicone button
Low voltage alarm	4.8 V	Unlocking mode	Password, fingerprint, IC card, mechanical key
Voltage range	4.5 ~ 6 v	Fingerprint head type	Semiconductor fingerprint head
Standby current	65 microampere	Administrator user	1 pc (Password user)
Work current	Less than 200 mah	Ordinary user	299 PCS (fingerprint, password, card)
Unlocking time	≈1.5 seconds	Recognition rate (FAR)	<0.001%
Operating temperature range	-20 to 70 degrees Celsius	True rejection rate (FRR)	<1.0%

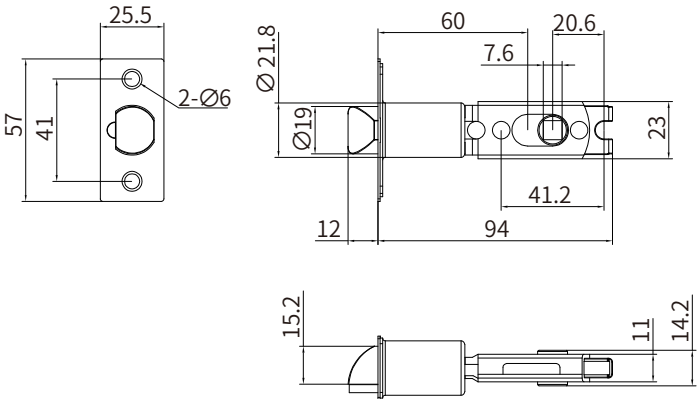
Panel measurement

Unit: mm



Mortise measurement

Unit: mm



|| Moudle No.: LS-C90



TTLock APP



Colour:



● Black



● Brown

Technical parameter

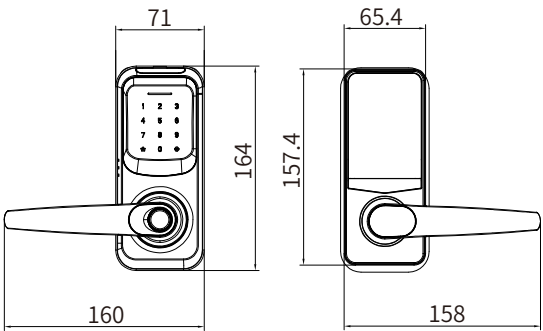
- **【Multiple unlock ways】**: App+Fingerprint+Password+Card+Manual key, WiFi remote control (requires additional gateway device).
- **【CNC procession】**: High quality end just like the phone production requirment, one by one CNC procession, not by mould batch production.
- **【Durability and stability】**: Intelligent door lock has low power alarm function. the door lock has an emergency charging port (Micro-USB),
- **【Smart Home Access】**: Send eKeys to friends or family, manage your smartphone's to view your access history.
- **【Virtual password】**: it easy to enter your password in the dark, while voyeuristic virtual passwords help protect the privacy of access codes.
- **【Multiple application】**: replaces the standard single cylinder American door lock and fits right and left doors, perfect for working in different environments in individual homes, rentals, co-op Spaces, offices or stores.

Technical parameter

Bluetooth standard	Bluetooth 4.1ble	Key type	Capacitive touch button
Supported mobile phone	Android 4.3 / IOS 7.0 or above	IC cards Capacity	Mifare M1 card 200
Power supply mode	4 alkaline dry batteries	Unlocking Ways	App, password, fingerprint, IC card, mechanical key
Low voltage alarm	4.8V	Fingerprint head type	Semiconductor fingerprint head
Voltage range	4.5~6V	Fingerprint capacity	120 pieces
Standby current	65 microamps	FAR	<0.001%
Working current	Less than 200 Ma	FRR	<1.0%
Unlocking time	≈ 1.5 seconds	Passwords Capacity	Custom and permanent password 150
Operating temperature	-20 ~ 70 ° C		Other dynamic passwords 150

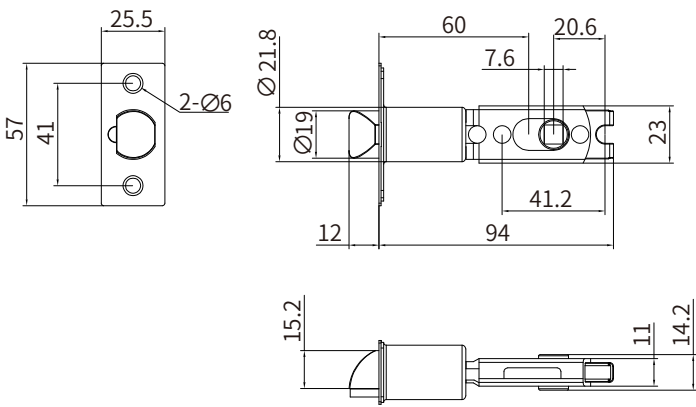
Panel measurement

Unit: mm



Mortise measurement

Unit: mm



|| Moudle No.: LS-C82A



TTLock APP



Colour:



Silver



Black

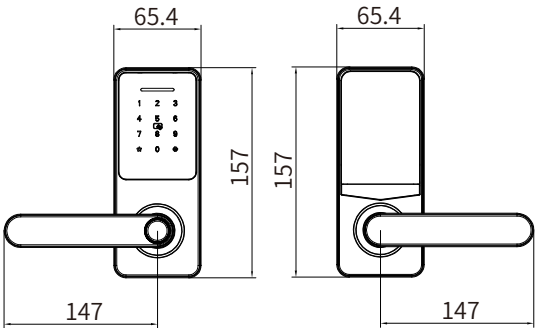
Technical parameter

- **【Multiple unlock ways】**: App+Fingerprint+Password+Card+Manual key, WiFi remote control (requires additional gateway device).
- **【CNC procession】**: High quality end just like the phone production requirment, one by one CNC procession, not by mould batch production.
- **【Durability and stability】**: Intelligent door lock has low power alarm function. the door lock has an emergency charging port (Micro-USB),
- **【Smart Home Access】**: Send eKeys to friends or family, manage your smartphone's to view your access history.
- **【Virtual password】**: it easy to enter your password in the dark, while voyeuristic virtual passwords help protect the privacy of access codes.
- **【Multiple application】** : replaces the standard single cylinder American door lock and fits right and left doors, perfect for working in different environments in individual homes, rentals, co-op Spaces, offices or stores.

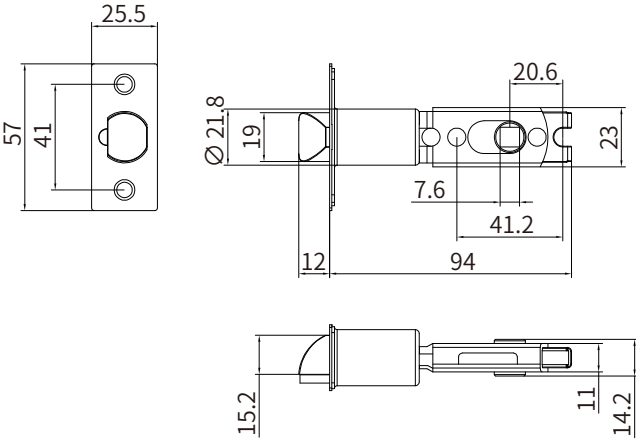
Technical parameter

Bluetooth standard	Bluetooth 4.1ble	Key type	Capacitive touch button
Supported mobile phone	Android 4.3 / IOS 7.0 or above	IC cards Capacity	Mifare M1 card 200
Power supply mode	4 alkaline dry batteries	Unlocking Ways	App, password, fingerprint, IC card, mechanical key
Low voltage alarm	4.8V	Fingerprint head type	Semiconductor fingerprint head
Voltage range	4.5~6V	Fingerprint capacity	120 pieces
Standby current	65 microamps	FAR	<0.001%
Working current	Less than 200 Ma	FRR	<1.0%
Unlocking time	≈ 1.5 seconds	Passwords Capacity	Custom and permanent password 150
Operating temperature	-20 ~ 70 ° C		Other dynamic passwords 150

Panel measurement



Mortise measurement



|| Moudle No.: LS-C89



Colour:



Technical parameter

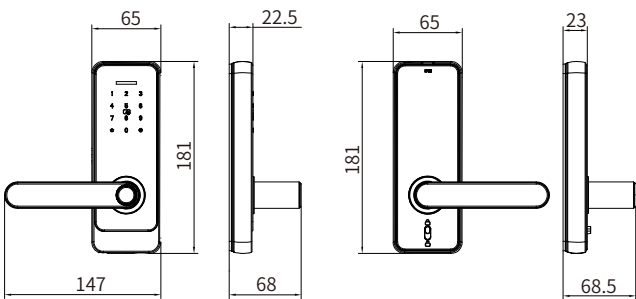
- **【Keyless Smart Locks】**- 5 unlocking ways: TTLock app+keyboard+fingerprint + smart card+Physical key
- **【Security and Convinient】** Anytime, Anywhere Security and Control With WiFi Gateway (optional add-on, sold separately,remotely lock and unlock your door, set up code or simply check status from anywhere, via mobile app.
- **【3D fingerprint sensor】** Hold the handle and press the fingerprint to unlock it. 100 fingerprints can identify you in less than 1 to 1.5 seconds, and is ideal for children and the elderly.
- **【Battery-powered, external power supply and spare key】**Smart key lock (not included) powered by 4 AA batteries

Technical parameter

Bluetooth standard	Bluetooth 4.1ble	Key type	Capacitive touch button
Supported mobile phone	Android 4.3 / IOS 7.0 or above	IC cards Capacity	Mifare M1 card 200
Power supply mode	4 alkaline dry batteries	Unlocking Ways	App, password, fingerprint, IC card, mechanical key
Low voltage alarm	4.8V	Fingerprint head type	Semiconductor fingerprint head
Voltage range	4.5~6V	Fingerprint capacity	120 pieces
Standby current	65 microamps	FAR	<0.001%
Working current	Less than 200 Ma	FRR	<1.0%
Unlocking time	≈ 1.5 seconds	Passwords Capacity	Custom and permanent password 150
Operating temperature	-20 ~ 70 ° C		Other dynamic passwords 150

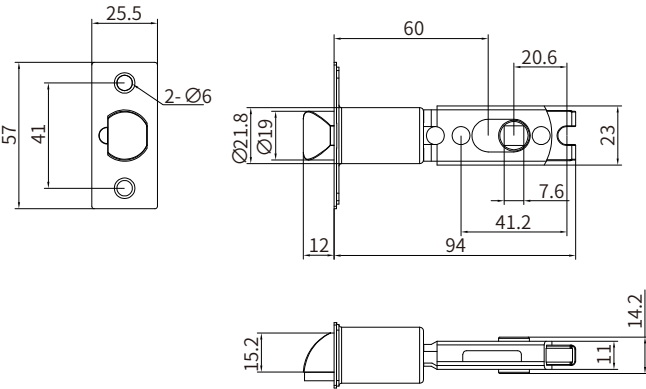
Panel measurement

Unit: mm



Mortise measurement

Unit: mm



|| Moudle No.: LS-C13



TTLock APP



Colour:



Black

Technical parameter

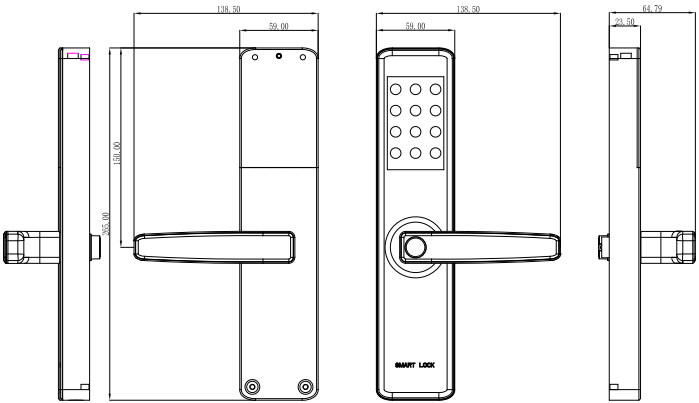
- **【Keyless Smart Locks】**- 5 unlocking ways: TTLock app+keyboard+fingerprint + smart card+Physical key
- **【Security and Convinient】** -Anytime, Anywhere Security and Control With WiFi Gateway (optional add-on, sold separately,remotely lock and unlock your door, set up code or simply check status from anywhere, via mobile app.
- **【3D fingerprint sensor】** Hold the handle and press the fingerprint to unlock it. 100 fingerprints can identify you in less than 1 to 1.5 seconds, and is ideal for children and the elderly.
- **【Battery-powered, external power supply and spare key】** Smart key lock (not included) powered by 4 AA batteries

Technical parameter

Bluetooth standard	Bluetooth 4.1ble	Key type	Capacitive touch button
Supported mobile phone	Android 4.3 / IOS 7.0 or above	IC cards Capacity	Mifare M1 card 200
Power supply mode	4 alkaline dry batteries	Unlocking Ways	App, password, fingerprint, IC card, mechanical key
Low voltage alarm	4.8V	Fingerprint head type	Semiconductor fingerprint head
Voltage range	4.5~6V	Fingerprint capacity	120 pieces
Standby current	65 microamps	FAR	<0.001%
Working current	Less than 200 Ma	FRR	<1.0%
Unlocking time	≈ 1.5 seconds	Passwords Capacity	Custom and permanent password 150
Operating temperature	-20 ~ 70 ° C		Other dynamic passwords 150

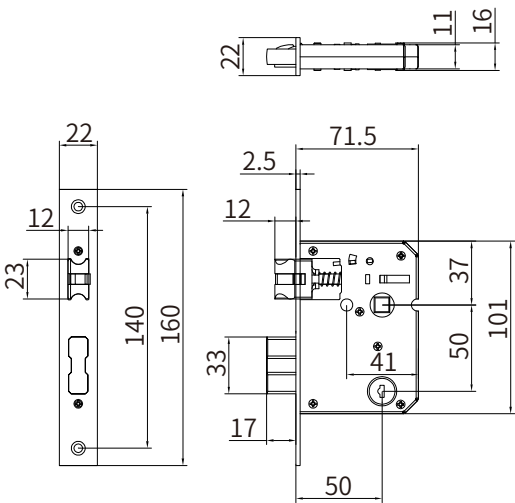
Panel measurement

Unit: mm



Mortise measurement

Unit: mm



|| Moudle No.: LS-C91



TTLock APP



Colour:



Technical parameter

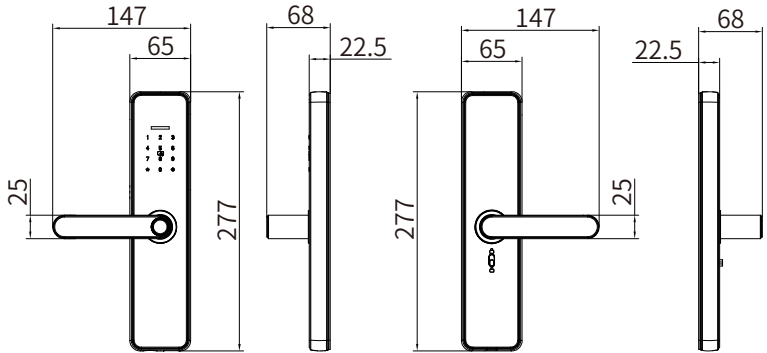
- **【Keyless Smart Locks】**- 5 unlocking ways: TTLock app+keyboard+fingerprint + smart card+Physical key
- **【Security and Convinient】** -Anytime, Anywhere Security and Control With WiFi Gateway (optional add-on, sold separately,remotely lock and unlock your door, set up code or simply check status from anywhere, via mobile app.
- **【3D fingerprint sensor】** Hold the handle and press the fingerprint to unlock it. 100 fingerprints can identify you in less than 1 to 1.5 seconds, and is ideal for children and the elderly.
- **【Battery-powered, external power supply and spare key】**Smart key lock (not included) powered by 4 AAA batteries
- Single latch60/70, European 5050/ 6050/ 3585/ 4585/ 6085/ 6072 / 5572

Technical parameter

Bluetooth standard	Bluetooth 4.1ble	Key type	Capacitive touch button
Supported mobile phone	Android 4.3 / IOS 7.0 or above	IC cards Capacity	Mifare M1 card 200
Power supply mode	4AAA battery	Unlocking Ways	App, password, fingerprint, IC card, mechanical key
Low voltage alarm	4.8V	Fingerprint head type	Semiconductor fingerprint head
Voltage range	4.5~6V	Fingerprint capacity	120 pieces
Standby current	65 microamps	FAR	<0.001%
Working current	Less than 200 Ma	FRR	<1.0%
Unlocking time	≈ 1.5 seconds	Passwords Capacity	Custom and permanent password 150
Operating temperature	-20 ~ 70 ° C		Other dynamic passwords 150

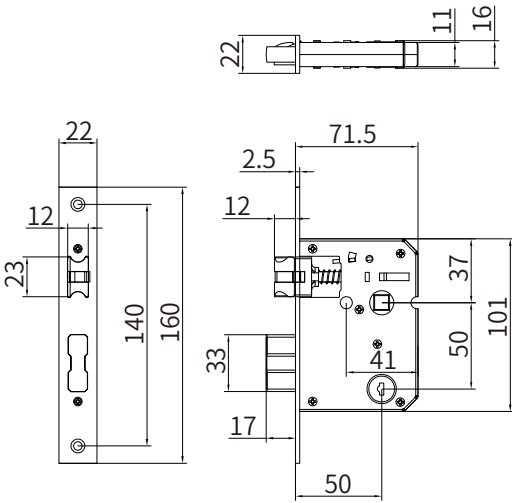
Panel measurement

Unit: mm

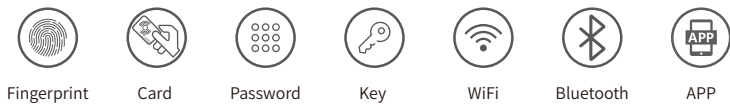


Mortise measurement

Unit: mm



|| Moudle No.: LS-C96



TTLock APP



TTHotel APP

Colour:



● Black

Technical parameter

- **【5-in-1 keyless Unlock ways】** :3D Biometric Fingerprint+RFID Card+Anti-peep Keypad Code+TUYA APP+Key+ Auto-Relock+Passage Mode+ Low Battery Reminder+Voice Guide; The lock can also be remotely operated no matter where are you ,bring you an easy intelligent home life.
- **【STRONG STRUCTURE】** The whole lock body is made of Stainless steel 304,It has the advantages of anti-rust, anti-Collision ,anti-drilling, anti-prying ,long service life, Sturdy and reliable.
- **【HIGH SECURITY】** Anti-Fake-finger,anti-Technical-Unlocking , anti-break-in alarm,preventing high-frequency pulse unlocking,Sturdy and reliable mechanical make sure maximum security and convenience for you.
- **【STRONG APP FEATURES】** The APP enables you to unlock door via your phone, add or delete users,get Log Record that who' s entered and exactly when they did from your phone APP at anywhere, anytime,grant access for specific dates or periods, make you enjoy the latest biomet-ric Cloud technology.
- **【Package Content】**: A:C81*1. B: Back-up door key*2;C: Card*2; D: Installation and Operation manual*1

Technical parameter

Item Number	C96
Material Made	Aluminium Alloy
Unlock Ways	TTLOCK App,Fingerprint, Password, Card, Mechanical Key
Power Supply	4AA Batteries(6V)
Card Capacity	200pcs
Finger Capacity	150pcs
Password Capacity	300pcs
Fingerprint Reader	FPC Fingerprint Reader

Card Type	MF1 Card (13.56MHz)
Identification Time	<0.3S
Low Voltage Warning	Below 4.8V
Working Temperature	-20℃~70℃
Working Humidity	10%~95%
Application Places	Residential, Apartment, Home, Office, Airbnb
Door Thickness	30mm~75mm

Panel measurement

Unit: mm



Mortise measurement

Unit: mm



Moudle No.: LS-C81



TTLock APP



TTHotel APP



Colour:



Silver



Black

Technical parameter

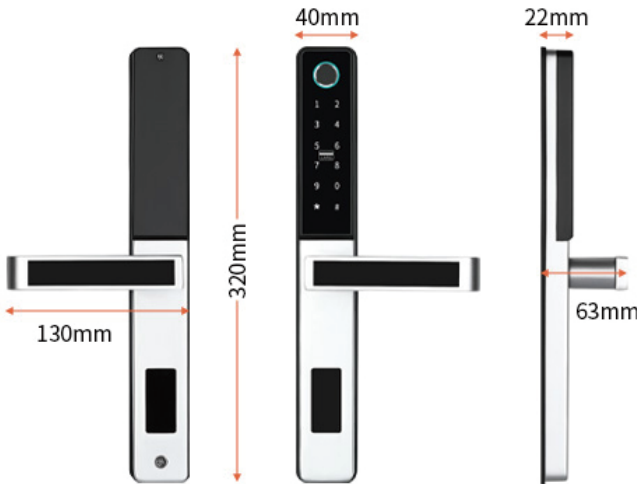
- **【5-in-1 keyless Unlock ways】** :3D Biometric Fingerprint+RFID Card+Anti-peep Keypad Code+TUYA APP+Key+ Auto-Relock+Passage Mode+ Low Battery Reminder+Voice Guide; The lock can also be remotely operated no matter where you are ,bring you an easy intelligent home life.
- **【STRONG STRUCTURE】** The whole lock body is made of Stainless steel 304,It has the advantages of anti-rust, anti-Collision ,anti-drilling, anti-prying ,long service life, Sturdy and reliable.
- **【HIGH SECURITY】** Anti-Fake-finger,anti-Technical-Unlocking , anti-break-in alarm,preventing high-frequency pulse unlocking,Sturdy and reliable mechanical make sure maximum security and convenience for you.
- **【STRONG APP FEATURES】** The APP enables you to unlock door via your phone, add or delete users,get Log Record that who’ s entered and exactly when they did from your phone APP at anywhere, anytime,grant access for specific dates or periods, make you enjoy the latest biometric Cloud technology.
- **【Package Content】**: A:C81*1. B: Back-up door key*2;C: Card*2; D: Installation and Operation manual*1

Technical parameter

Item Number	C81
Material Made	Aluminium Alloy
Unlock Ways	TTLOCK App,Fingerprint, Password, Card, Mechanical Key
Power Supply	4AA Batteries(6V)
Card Capacity	200pcs
Finger Capacity	150pcs
Password Capacity	300pcs
Fingerprint Reader	FPC Fingerprint Reader

Card Type	MF1 Card (13.56MHz)
Identification Time	<0.3S
Low Voltage Warning	Below 4.8V
Working Temperature	-20°C~70°C
Working Humidity	10%~95%
Application Places	Residential, Apartment, Home, Office, Airbnb
Door Thickness	30mm~75mm

Panel measurement



Mortise measurement



|| Moudle No.: LS-C81A



TTLock APP



Colour:



Technical parameter

- **【Keyless Smart Locks】**- 5 unlocking ways: TTLock app+keyboard+fingerprint+ smart card+Physical key
- **【Security and Convinient】** -Anytime, Anywhere Security and Control With WiFi Gateway (optional add-on, sold separately,remotely lock and unlock your door, set up code or simply check status from anywhere, via mobile app.
- **【3D fingerprint sensor】** Hold the handle and press the fingerprint to unlock it. 100 fingerprints can identify you in less than 1 to 1.5 seconds, and is ideal for children and the elderly.
- **【Battery-powered, external power supply and spare key】**Smart key lock (not included) powered by 4 AA batteries

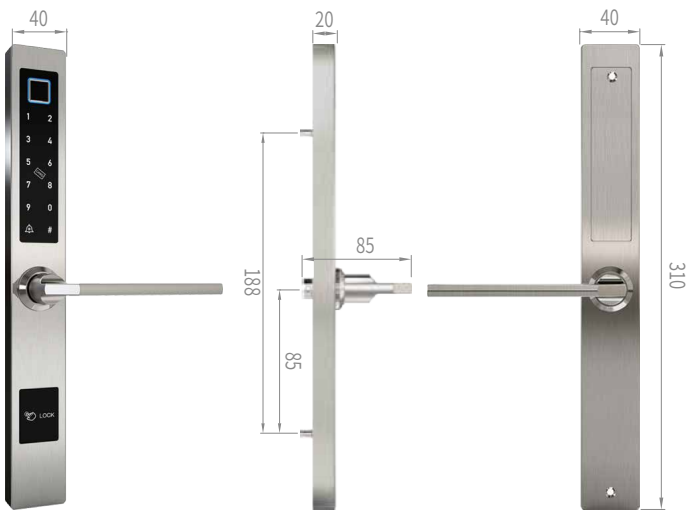
Technical parameter

Item Number	C81-A
Material	Panel Aluminum /Handle Zinc alloy
Unlock Ways	APP/ fingerprint/ password/IC card/key/Bluetooth
Power Supply	4AA Batteries(6V)
Fingerprint Capacity	150pcs
Card Capacity	200pcs
Key Quantity	2pcs
Card quantity	2pcs

Fingerprint Type	FPC 160X160
Mortise	28/35/45/50/60/70/85
Working Temperature	-20°C~70°C
Working Humidity	10%~95%
Size	310*40*20mm
Door Thickness	30mm~75mm
Color	Silver and Black

Panel measurement

Unit: mm



Mortise measurement

Unit: mm



|| Moudle No.: LS-A50



TTLock APP



Colour:



Silver



Black



Rose gold

Technical parameter

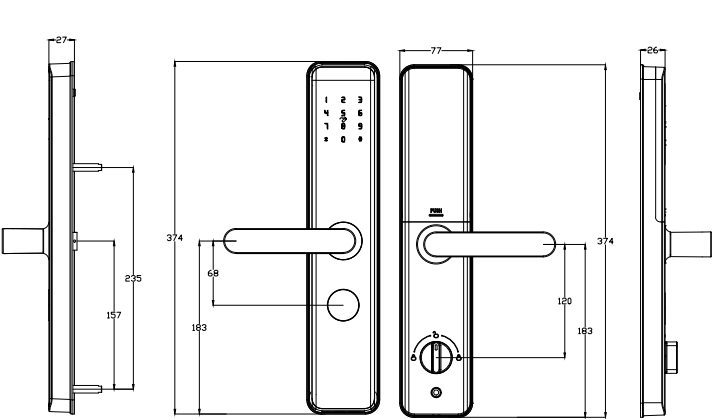
- **【Keyless Smart Locks】**- 5 unlocking ways: TTLock app+keyboard+fingerprint + smart card+Physical key
- **【Security and Convinient】** -Anytime, Anywhere Security and Control With WiFi Gateway (optional add-on, sold separately,remotely lock and unlock your door, set up code or simply check status from anywhere, via mobile app.
- **【3D fingerprint sensor】** Hold the handle and press the fingerprint to unlock it. 100 fingerprints can identify you in less than 1 to 1.5 seconds, and is ideal for children and the elderly.
- **【Battery-powered, external power supply and spare key】**Smart key lock (not included) powered by 4 AA batteries

Technical parameter

Bluetooth standard	Bluetooth 4.1ble	Key type	Capacitive touch button
Supported mobile phone	Android 4.3 / IOS 7.0 or above	IC cards Capacity	Mifare M1 card 200
Power supply mode	4 alkaline dry batteries	Unlocking Ways	App, password, fingerprint, IC card, mechanical key
Low voltage alarm	4.8V	Fingerprint head type	Semiconductor fingerprint head
Voltage range	4.5~6V	Fingerprint capacity	120 pieces
Standby current	65 microamps	FAR	<0.001%
Working current	Less than 200 Ma	FRR	<1.0%
Unlocking time	≈ 1.5 seconds	Passwords Capacity	Custom and permanent password 150
Operating temperature	-20 ~ 70 ° C		Other dynamic passwords 150

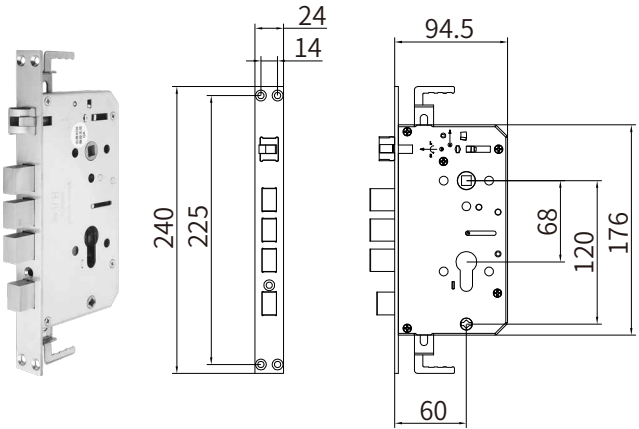
Panel measurement

Unit: mm

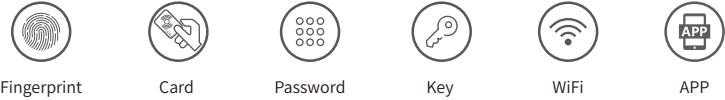


Mortise measurement

Unit: mm



Moudle No.: LS-A60



Colour:



Grey



Rose gold

Technical parameter

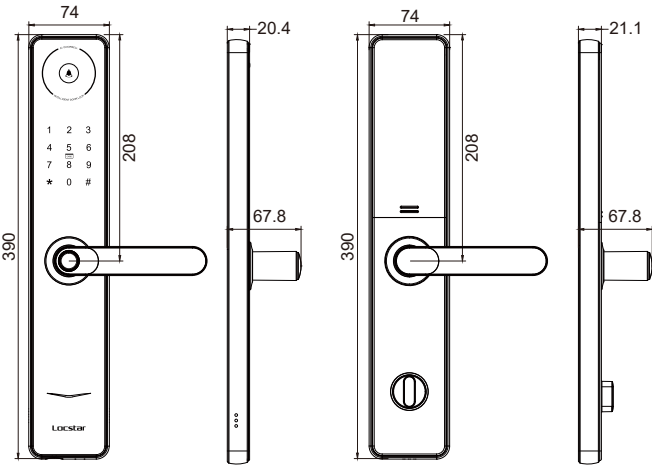
- Access by TUYA(WiFi) APP Access, M1 Card, Fingerprint, Pass code, Mechanical Key Unlock
- TUYA WiFi/BLE App version are available to choose. Convenient APP management system, you can manage your smart lock anytime and anywhere;
- Unique stylish thin panel, it can be fit most of the wooden, sliding doors.
- One-Touch-Access Biometric Fingerprint sensor on the reader.
- Strong and secure Aluminum alloy lock panel, Anti-corrosion and study.
- Multi-level administrator settings to help you better manage your smart buildings;
- Reversible free style handle.
- Emergency powersupply in case of lost power;
- We can customize production according to your requirements,OEM/ODM;

Technical parameter

Support phone system	Android 4.3/IOS7.0 or above		Bluetooth standard	Bluetooth 4.1
Power supply	4* AA alkaline battery		Card type	Mifare M1
Low-voltage alarm	4.8V		Cards Capacity	200pcs
Static current	65 μA		Unlocking way	APP、 Password、 fingerprint、 IC card、 key
Working current	<200 μA		Motor output voltage	-0.3V
Unlocking time	≈1.5 seconds		Fingerprint module	semi-conductor fingerprint module
Working temperature	-20°C~70°C		Fingerprint capacity	120pcs
Key type	Touch screen key		False recognition rate	<0.001%
Password Capacity	Customized password+ permanent password	150pcs	Rejection rate	<1.0%
	Dynamic password	No limited		

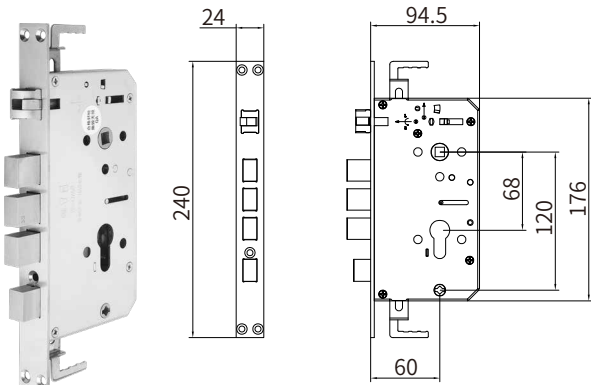
Panel measurement

Unit: mm

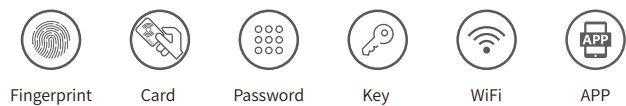


Mortise measurement

Unit: mm



|| Moudle No.: LS-A61



TTLock APP



Colour:



Rose gold



Grey

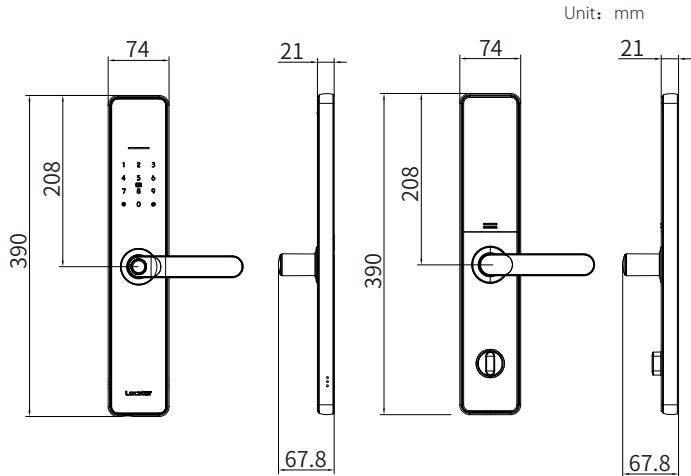
Technical parameter

- Access by TTLOCK(WiFi) APP Access, M1 Card, Fingerprint, Pass code, Mechanical Key Unlock
- TT lock WiFi/BLE App version are available to choose. Convenient APP management system, you can manage your smart lock anytime and anywhere;
- Unique stylish thin panel, it can be fit most of the wooden, sliding doors.
- One-Touch-Access Biometric Fingerprint sensor on the reader.
- Strong and secure Aluminum alloy lock panel, Anti-corrosion and study.
- Multi-level administrator settings to help you better manage your smart buildings;
- Reversible free style handle.
- Emergency powersupply in case of lost power;
- We can customize production according to your requirements,OEM/ODM;

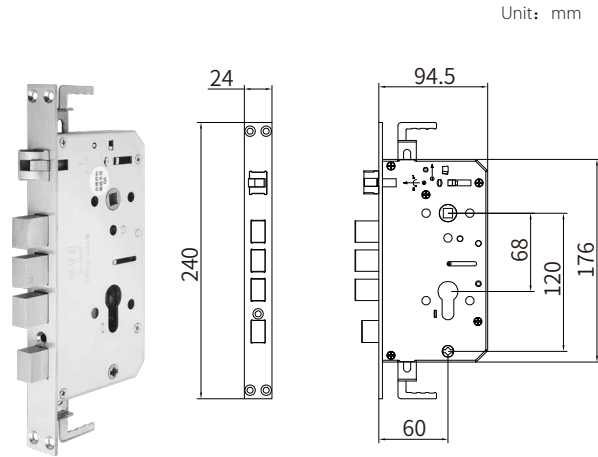
Technical parameter

Support phone system	Android 4.3/IOS7.0 or above		Bluetooth standard	Bluetooth 4.1
Power supply	4* AA alkaline battery		Card type	Mifare M1
Low-voltage alarm	4.8V		Cards Capacity	200pcs
Static current	65 μ A		Unlocking way	APP、 Password、 fingerprint、 IC card、 key
Working current	<200 μ A		Motor output voltage	-0.3V
Unlocking time	\approx 1.5 seconds		Fingerprint module	semi-conductor fingerprint module
Working temperature	-20°C~70°C		Fingerprint capacity	120pcs
Key type	Touch screen key		False recognition rate	<0.001%
Password Capacity	Customized password+ permanent password	150pcs	Rejection rate	<1.0%
	Dynamic password	No limited		

Panel measurement



Mortise measurement



Model No.: LS-S61



Colour:



Rose gold



Grey

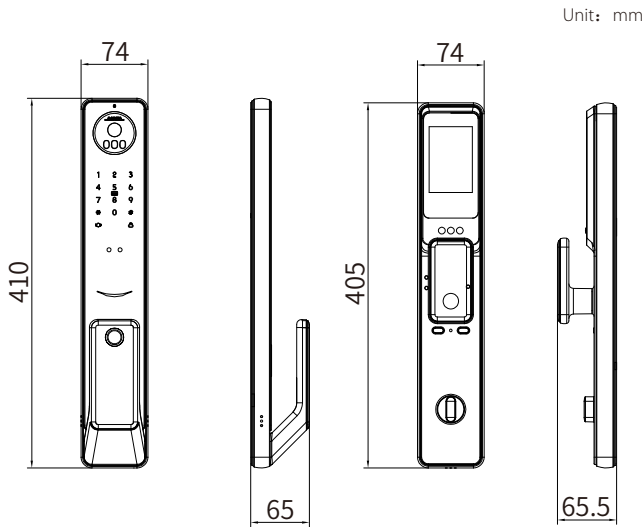
Technical parameter

- 6 ways to unlock: 3D Face, APP, Fingerprint Unlock, Pass Code, Card, Mechanical Key Unlock;
- Visual intercom with Peep hole: you can see who is in front of your door remotely by phone or at home by screen on lock.
- No worry when no power or fire can not unlock the door inside, indoor has one mechanical handle to unlock door directly.
- Convenient APP management system, you can manage your smart lock anytime and anywhere;
- You can manage a large number of locks with just one phone;
- Multi-level administrator settings to help you better manage your smart buildings;
- Query unlock records anytime and anywhere, the first time to know your home security;
- The compact size fits all wooden doors and metal doors;
- FPC fingerprint reader gives you the best security experience ;
- We can customize production according to your requirements,OEM/ODM;

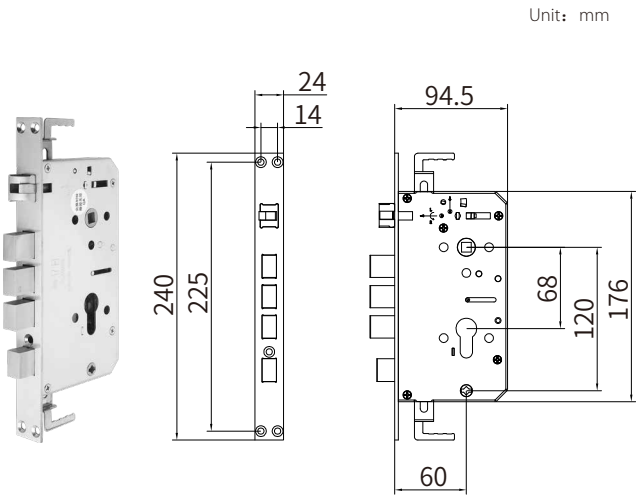
Technical parameter

Power supply mode	7.4V Lithium battery	Card type	Mifare S50 Card
Support phone system	ANDROID 4.3 or IOS7.0 or higher	Unlocking way	APP, password, fingerprint, I card, mechanical key, face recognition, Palm Veins Unlock
Standby current	<70 microampere	Fingerprint head type	Semiconductor fingerprint head
Emergency power supply	5V (micro USB)	Fingerprint capacity	≤99 groups (2-100 numbered users)
Low voltage alarm	7.2V	Recognition rate (FAR)	< 0.001%
Power voltage	4.5-9V	True rejection rate (FRR)	< 1.0%
Password quantity	<100 groups (No. 1 administrator, No. 2-100 user)	Operating temperature	-10 °C ~60 °C
Working current	< 2 A (average)	Working humidity	45~90%RH
Unlocking time	≈ 1.5 seconds	Storage temperature	-30~70°C
Networking mode	WIFI	Storage humidity	45~90%RH
Applicable gate type	Wooden door/security door	Number of IC cards	≤100 groups (2-100 numbered users)
Keyboard	Standard 14 keys (0-9, *# Doorbell lockout)	Data storage type	Cloud storage
Applicable door thickness	45-120MM	Alarm function	Anti-demolition alarm/low power alarm/system lock alarm

Panel measurement



Mortise measurement



|| Moudle No.: LS-T100A



Colour:



Rose gold



Grey

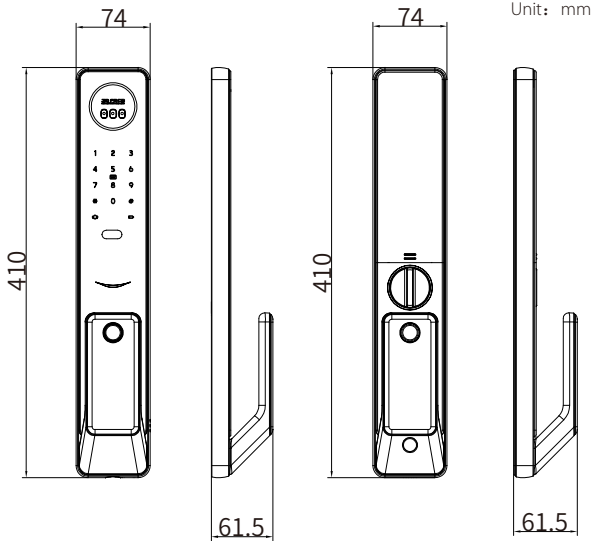
Technical parameter

- 6 ways to unlock: 3D Face, APP, Fingerprint Unlock, Pass Code, Card, Mechanical Key Unlock;
- Convenient APP management system, you can manage your smart lock anytime and anywhere;
- You can manage a large number of locks with just one phone;
- Simple Door Handle settings, suitable for various scenarios;
- Multi-level administrator settings to help you better manage your smart buildings;
- Query unlock records anytime and anywhere, the first time to know your home security;
- The compact size fits all wooden doors and metal doors;
- FPC fingerprint reader gives you the best security experience ;
- Emergency powersupply in case of lost power;
- We can customize production according to your requirements,OEM/ODM;

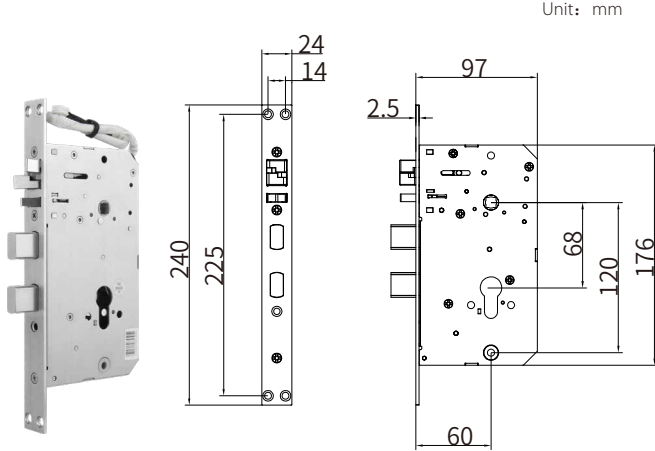
Technical parameter

Bluetooth standard	Bluetooth 5.0	Cards Capacity	1000pcs
Support phone system	Android 4.3/IOS7.0 or above	Unlocking way	APP, Password, fingerprint, IC card, mechanical key , ekey, face
Power supply	7.4V lithium battery	Fingerprint module	semi-conductor fingerprint module
Emergency power supply	5V (micro USB)	Fingerprint capacity	100pcs
Low voltage alarm	7.2V	False recognition rate	≤ 0.001%
Power voltage	4.5-9V	Rejection rate	≤ 0.1%
Static current	< 153 μA	Working temperature	-10 °C ~60 °C
Working current	< 2 A (avarage)	Relative humidity	45~90%RH
Unlocking time	≈ 1.5 seconds	Storage temperature	-30~70°C
Remote control	distance is 5-15m , capacity: 15pcs	Storage humidity	45~90%RH
Motor	8V standard mortise	Face recognition	recognition time:0.5s (hot) , 1.4s (cold) recognition distance:0.4m~1m, ~0.5m the bestbio-assay:TAR:98% FAR:0.00001Face recognition:TAR :98% FAR:0.00001
Keypad	16 keys. (0-9, *,#, doorbell, locked)		
Key type	Touch screan key	Face users	50
Password Capacity	Customized password+ permanent password		
	Dynamic password		
Card type	Mifare M1		

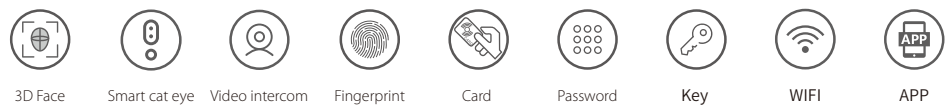
Panel measurement



Mortise measurement



|| Moudle No.: LS-S100A



TTLock APP

Colour:



Grey

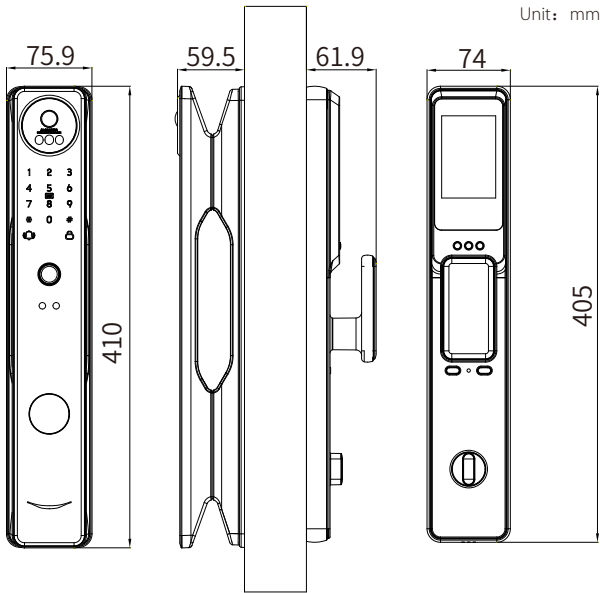
Technical parameter

- 6 ways to unlock: 3D Face, APP, Fingerprint Unlock, Pass Code, Card, Mechanical Key Unlock;
- Convenient APP management system, you can manage your smart lock anytime and anywhere;
- You can manage a large number of locks with just one phone;
- Simple Door Handle settings, suitable for various scenarios;
- Multi-level administrator settings to help you better manage your smart buildings;
- Query unlock records anytime and anywhere, the first time to know your home security;
- The compact size fits all wooden doors and metal doors;
- FPC fingerprint reader gives you the best security experience ;
- Emergency powersupply in case of lost power;
- We can customize production according to your requirements,OEM/ODM;

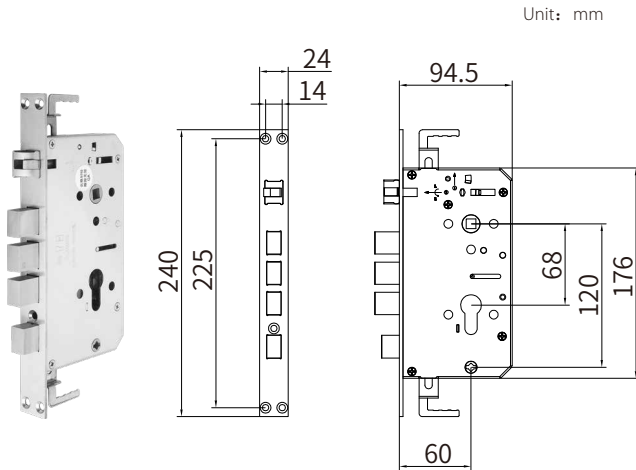
Technical parameter

Bluetooth standard	Bluetooth 5.0		Cards Capacity	1000pcs
Support phonesystem	Android 4.3/IOS7.0 or above		Unlocking way	APP, Password, fingerprint, IC card, mechanical key , ekey, face
Power supply	7.4V lithium battery		Fingerprint module	semi-conductor fingerprint module
Emergency powersupply	5V (micro USB)		Fingerprint capacity	100pcs
Low voltage alarm	7.2V		False recognition rate	≤ 0.001%
Power voltage	4.5-9V		Rejection rate	≤ 0.1%
Static current	< 153 μA		Working temperature	-10 °C ~60 °C
Working current	< 2 A （avarage）		Relative humidity	45~90%RH
Unlocking time	≈ 1.5 seconds		Storage temperature	-30~70℃
Remote control	distance is 5-15m , capacity: 15pcs		Storage humidity	45~90%RH
Motor	8V standard mortise		Face recognition	recognition time:0.5s (hot) , 1.4s (cold) recognition distance:0.4m~1m, ~0.5m the bestbio-assay:TAR:98% FAR:0.00001Face recognition:TAR :98% FAR:0.00001
Keypad	16 keys. （0-9,*,#, doorbell, locked）			
Key type	Touch screan key			
Password Capacity	Customized password+ permanent password	250pcs		
	Dynamic password	no limited		
Card type	Mifare M1		Face users	50

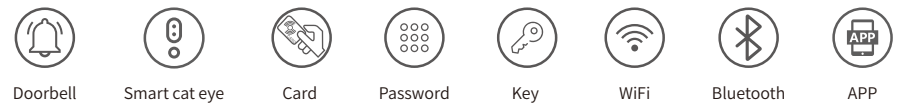
Panel measurement



Mortise measurement



|| Moudle No.: LS-C95



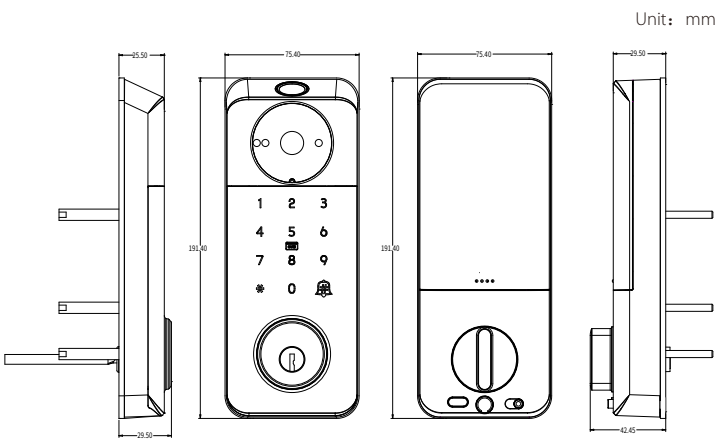
Technical parameter

- **【Triple Security Features】** : Experience peace of mind with this keyless entry door lock, integrating rapid fingerprint recognition, a crisp 2K HD camera, and a sophisticated video doorbell, ensuring your home's security is uncompromised.
- **【Remote Access and Real-Time Notifications】** : Stay connected to your home with the TUYA WIFI Security app, offering No Monthly Fee for remote door management and immediate notifications, so you're always informed, no matter where you are.
- **【Long-Lasting Battery Life and Robust Build】** : Count on endurance and resilience with a 5,000 mAh battery and a sturdy design that's certified to withstand extreme weather, from icy cold to scorching heat, ensuring reliability all year round for your keyless entry system.
- **【Easy Installation and Reliable Customer Support】** : Set up the security system in just 15 minutes, compatible with US/Canadian deadbolts without the need for drilling, and enjoy peace of mind with a 12-month warranty and 24/7 customer support.

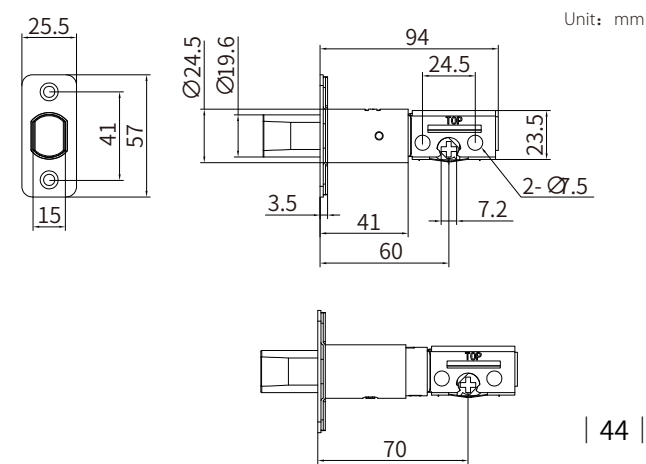
Technical parameter

Bluetooth standard	Bluetooth 5.0BLE	Fingerprint head type	Semiconductor fingerprint head
Network connection	2.4G WiFi 802.11b/g/n	Fingerprint capacity	100 pcs
Supported mobile phone systems	Android 4.3 or IOS7.0 or higher	Recognition rate (FAR)	< 0.001%
Power supply mode	7.4V Lithium (full charge 8.4v)	True rejection rate (FRR)	< 1.0%
Low alarm voltage	7.0 V	Operating temperature	- 10 °C ~ 60 °C
Voltage range	5~9V	sensor	2 million HD CMOS sensor color 0.1Lux@F1.2, black and white 0.01Lux@F1.2
Standby current	550 microampere (including cat eye, radar, face)	Image output	Hd: 1960*1080@12fps
Working current	< 3A (average)		Smooth: 640*360@25fps
Key type	Capacitive touch keys	Lens	Hd security mirror, 138° wide Angle, height 13±0.2mm
Password quantity	Custom and permanent password 250	Nearest object distance	0.3m
	Other dynamic passwords are unlimited	Day-night switching mode	support
Supported card types	MIFARE M1 card	IR-CUT voice intercom	support
Number of IC cards	1000 pcs	Mobile phone surveillance	Support mobile monitoring (iOS, Android)
Unlocking mode	App, password, fingerprint, IC card, wireless key	Cloud storage	support

Panel measurement



Mortise measurement



|| Moudle No.: LS-C78-A



TTLock APP



Colour:



Silver



Black

Technical parameter

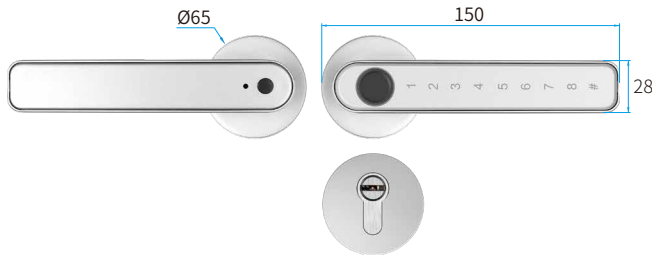
- **【3 unlocking methods】**: fingerprint + intelligent code + mechanical key. Suitable for all family members, even the elderly or children.
- **【3D security fingerprint sensor】** : Faster identification speed, identification time is less than 0.3 seconds. Safety: One-click operation, optimized by advanced fingerprint technology, identifies dry and wet fingerprints, suitable for children and the elderly. No need to pick up keys and memorize codes.
- **【suitable for most standard doors】**: suitable for left and right door. Door thickness range :3.5 cm to 5.08 cm thick.
- **【Multiple application and easy to install】** : Easy to install in a few minutes with just a screwdriver. Perfect for front doors, bedroom doors, garage entrances, etc. Ideal for homes, hotels and offices.

Technical parameter

Item Number	C78-A	Mortise:	Single trigeminal tongue/5050
Material Made	Aluminium Alloy	Working current:	250mA
Unlock Ways	Fingerprint, password, key	Low voltage alarm	75uA
Power Supply	4*AAA Batteries(6V)	Standby current	5V
Finger Capacity	150pcs	Working Temperature	-20°C~70°C
Password Capacity	300pcs	Working Humidity	10%~95%
Fingerprint type	FPC 160X160	Door Thickness	30mm~65mm
Size	150*65*28mm	Color	Silver and Black

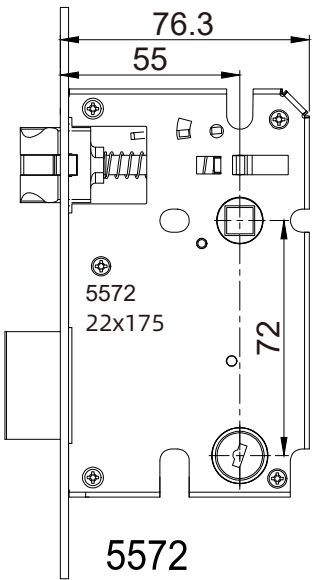
Panel measurement

Unit: mm



Mortise measurement

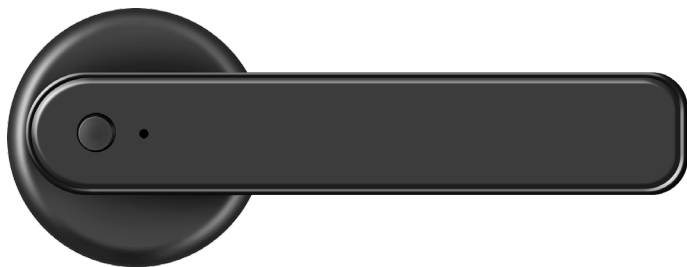
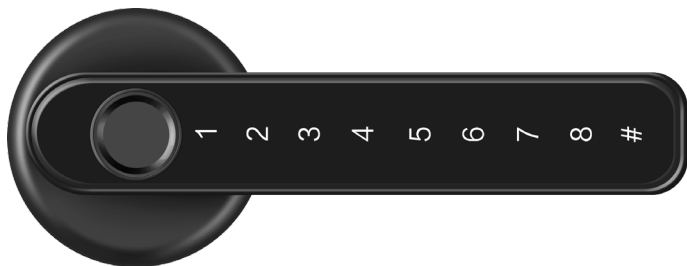
Unit: mm



|| Moudle No.: LS-C78-C



TTLock APP



Colour:



● Silver



● Black

Technical parameter

- **【3 unlocking methods】**: fingerprint + intelligent code + mechanical key. Suitable for all family members, even the elderly or children.
- **【3D security fingerprint sensor】**: Faster identification speed, identification time is less than 0.3 seconds. Safety: One-click operation, optimized by advanced fingerprint technology, identifies dry and wet fingerprints, suitable for children and the elderly. No need to pick up keys and memorize codes.
- **【suitable for most standard doors】**: suitable for left and right door. Door thickness range :3.5 cm to 5.08 cm thick.
- **【Multiple application and easy to install】**: Easy to install in a few minutes with just a screwdriver. Perfect for front doors, bedroom doors, garage entrances, etc. Ideal for homes, hotels and offices.

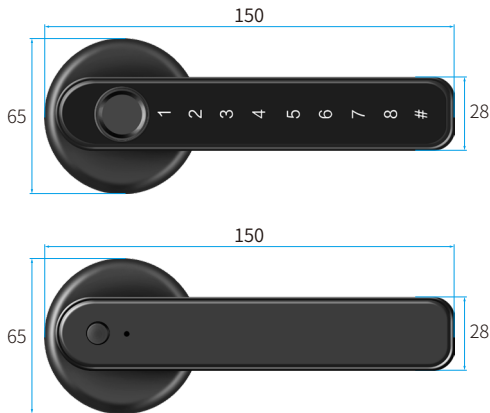
Technical parameter

Item Number	C78-C
Material Made	Zinc Alloy
Unlock Ways	Fingerprint, password, key
Power Supply	4*AAA Batteries(6V)
Finger Capacity	150pcs
Password Capacity	300pcs
Fingerprint type	FPC 160X160

Mortise:	Single trigeminal tongue
Working current:	250mA
Low voltage alarm	75uA
Standby current	5V
Working Temperature	-20°C~70°C
Working Humidity	10%~95%
Color	Silver and Black
Door Thickness	30mm~65mm

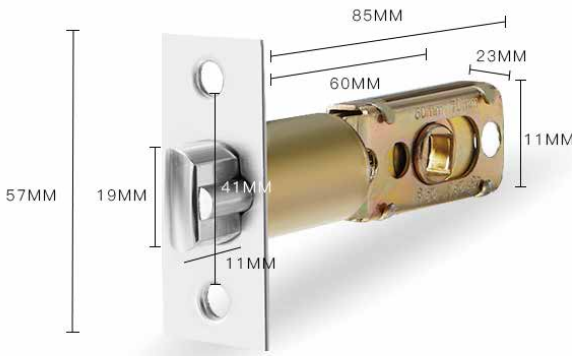
Panel measurement

Unit: mm



Mortise measurement

Unit: mm



Colour:



Silver



Black

Moudle No.: LS-C93



Bluetooth



APP



Technical parameter

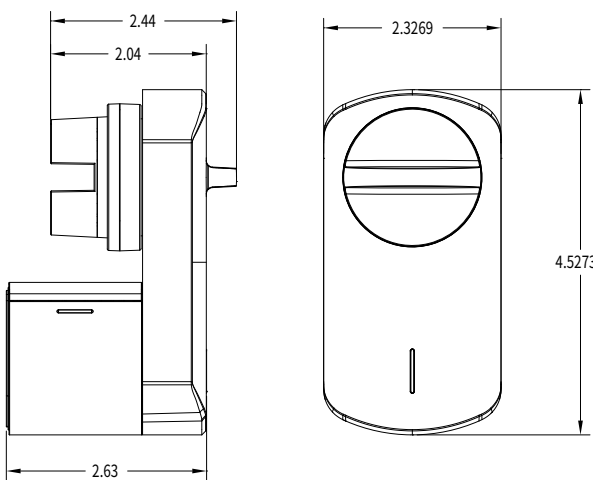
- **【Make mechanical to be smart】**: Our smart lock can make mechanical lock becomes a smart lock, and use smart phone app to unlock it.
- **【Easy to install, even more compatible】** : When setting up Smart Lock no tools are needed, simply use the 3M adhesive provided and you're good to go. Supports different locks and doesn't affect your original lock in any way.
- **【Auto-Lock & Home Sharing】** : You can preset lock timers, when your door closes for a certain period of time SwitchBot Keyless Entry Door Lock will then auto-lock. You can also set up Home Sharing to operate your lock via our app and share Lock access with family members.
- **【More APP custom choice】**: We can supply Isurpass/TTLOCK/TUYA different APP choice for smart home requirement.

Technical parameter

Materials	PC+ABS
Body size	111.6 x59x73. 2 mm
Body weight	253g(battery included)
battery	CR123A Battery x2
Battery life	About six months
Use environment	Indoor only
Support OS	iOS 11+, Android 5.0+
Communication mode	Bluetooth 5.0
Operating temperature	-10°C~45°C
Relative operating humidity	10% ~ 90%

Panel measurement

Unit: mm

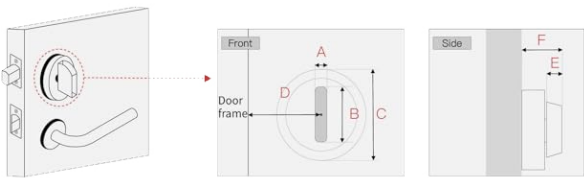


TTLock APP



Keep your physical key

Fits your existing deadbolt



A: 0.078~0.9in B: 0.9~1.65in C: <=2.2in D: >=1.57in
E: >=0.19in F: 0~2.2in

|| Moudle No.: LS-C83A



Fingerprint



Card



Password



Key



WiFi



Bluetooth



APP



Technical parameter

- **【Easy to install, wide range of applications】** This product is very simple to install, you don't need to punch holes at all, just external wiring and network equipment, very simple. It is very versatile and can be fitted with frameless/frameless glass doors, single/double doors, and left/right doors.
- **【Multiple unlocking methods】** -fingerprint+password+credit card+APP, as well as optional remote control, single card solution: support for various contactless smart cards (for example, add the second generation after use) ID card unlock simple, very practical, is a good helper to protect your family.
- **【Doorbell function and real-time voice alarm】** The product has doorbell function, just press the doorbell button #, you can immediately wake up the bell, but also has real-time voice alarm function, the whole process of voice navigation, easy to operate, practical, low price, absolutely suitable for your life assistant.
- **【Password Protection Design】** When you unlock with a password, you can add multiple incorrect passwords before/after entering the correct password. Press # to confirm the lock. (Anti-snooping garlic can be entered up to 30 digits.)
- **【Highly secure Smart Lock】** This smart fingerprint lock has an alarm clock lock function. When someone enters the wrong password five times in a row, the system will alarm and lock for three minutes. It also has a backup external power supply that fits the standard USB port on Android phones. Emergency power can be unlocked when the battery dies and the power fails.

Technical parameter

Fingerprint speed	≤0.3S	Emergency power supply	USB Type-C
False accept rate	≤0.001%	Working temperature	-25°C~+65°C
False reject rate	≤1%	Product weight	about 1.25kg
Static power consumption	≤120uA	Door opening mode	applicable push or pull, induction left open/right open
Fingerprint sensor	semiconductor biometric identification	Applicable door type	glass door, aluminum door with frame, wooden door, sliding door
Card type	M1 , IC	Door type specification	door gap 3 ~ 10mma) Frame-less door with the 8~12mm thick glass, the 8mm glass needs to install the thickening plates. b) Door with the 40~70mm thick frame. (door gap 3~10mm)
Storage capacity	fingerprint (100) card and password (1000groups)	Unlocking methods	fingerprint, password, card,temporary password Mechanical key unlocking (no key for framed door)
Power supply	4pcs 1.5V AA alkaline dry batteries		

Panel measurement

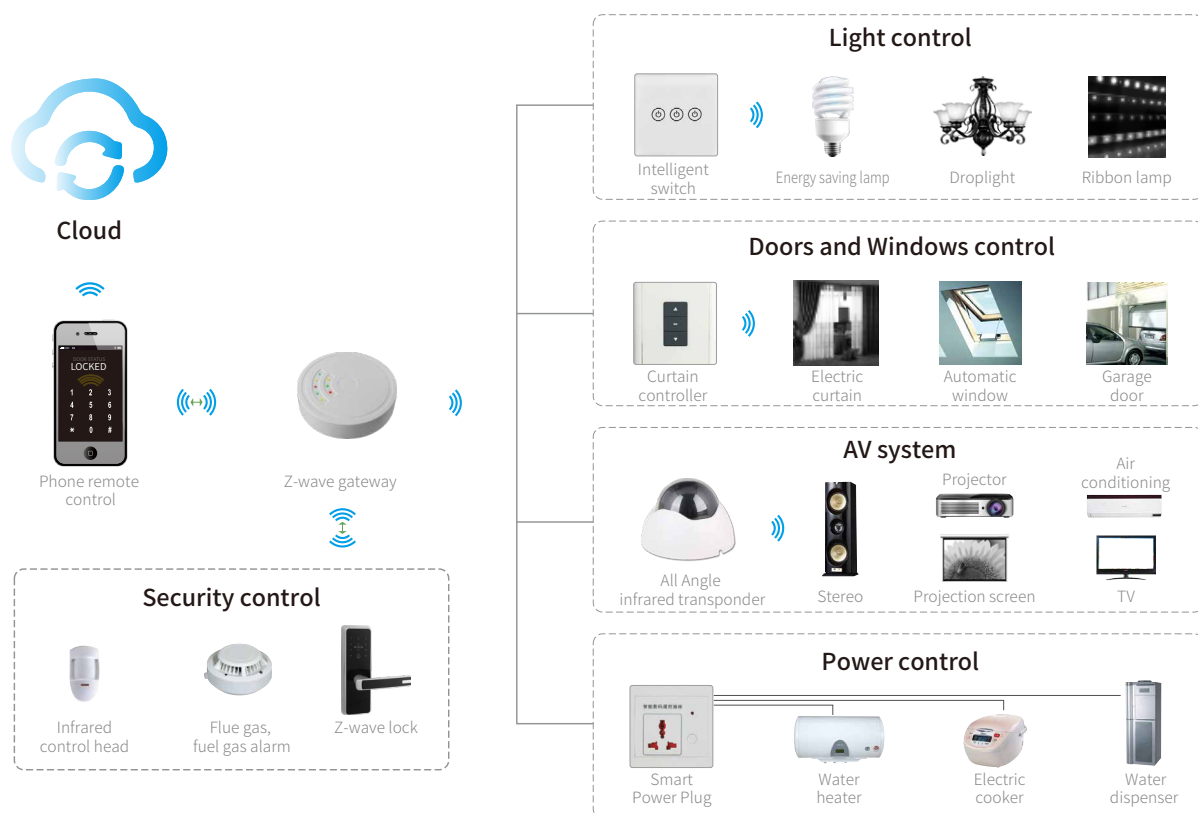
Unit:mm





Z-WAVE LOCK SYSTEM

Gateway Zigbee /Wifi for different scenes



The ZWAVE APP is a software from LOCSTAR develop, which is free for our customers. Security and convenience is one of the most important things which we all concern for smart home. Our wireless locks with Zwave technology (Zwave lock) can bring you all of these you expected. Our Zwave lock uses Zwave protocol which is an interoperable, wireless, RF-based communications technology, it is mature, proven and broadly deployed. Zwave lock is by far the world market leader in wireless and keyless access.

Security:

Control, monitoring and status reading applications to the lock through your smart phone. Operates in the sub-1GHz band; impervious to interference from Wi-Fi and other wireless technologies in the 2.4-GHz range. with AES128 encryption, IPV6, and multi-channel operation

Convenience:

Full interoperability through layer 6 with backwards compatibility to all versions. Standard Zwave protocol, compatible with other Zwave devices, if you already have Zwave solution smart home, just add our Zwave lock in the current system. no need wiring to the lock Control / monitoring your lock from anywhere through smart phone.

Application:

Anywhere you'd like to have wireless keyless management to your property, such as house, apartment, hotel, vacation rental properties.

Function Features:

Model	LS-ZG06	Working Frequency	ZWave 908.42MHz(US), 868.42MHz(EU) 921.42MHz(Aus)	Node NO.	232
Storage Humidity	10%-95%	Frequency	72MHz	Working Range	≤30m(inside), 100m (outside)
Storage Temperature	-20~70°C	Storage	128 Kbytes of Flash memory 20 Kbytes of SRAM	Network type	Mesh
Working Temperature	-20~60°C			Time to Add Node	30Seconds
Input Voltage	5V/2A			Range	≤6m
Core	ARM 32-bit Cortex™-M3 CPU			Frequency	38kHz

Smart Lock—Digital Lock

Module No.: LS-8015-TM



8015-TMM-BXG(6268)



8015-TMM-BXG(6226)

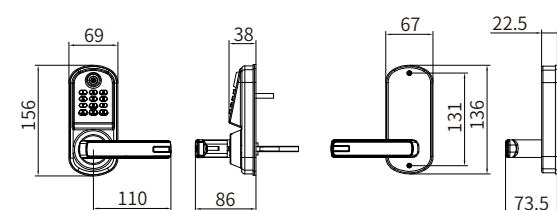
Colour: Silver

Description

1. Apartment lock.
2. Best choice for DIY installation, best choice for replacing the knob lock (single latch).
3. Unlocking way: TM Card + code + key.
4. Zinc alloy material.
5. Lift up handle for double lock (9500# mortise only).
6. Self-locking protection.
7. field reversible door lock handle.
8. Sleep mode to prevent illegal attempt.
9. External power poles (available).
10. Low voltage alarm.
11. Powered by 4 x AA Alkaline Battery.
12. Option on single latch mortise or five latch mortise.
13. Powerful code programming function, to set up user code with / without time limit.

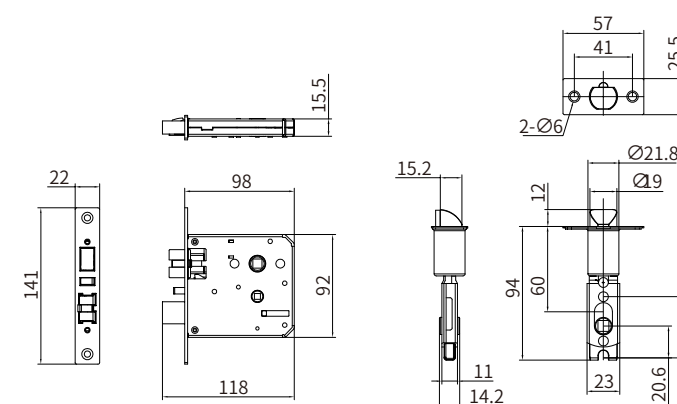
Panel measurement

Unit: mm

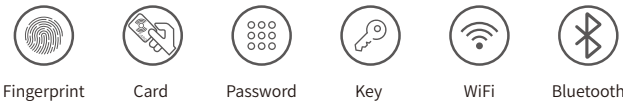


Mortise measurement

Unit: mm



|| Moudle No.: LS-C76A



TTLock APP

Colour:



Silver



Black

Technical parameter

- **【Keyless Smart Locks】**- 5 unlocking ways: App+keyboard+fingerprint + smart card+Physical key
- **【Security and Convinient】** -Anytime, Anywhere Security and Control With WiFi Gateway (optional add-on, sold separately,remotely lock and unlock your door, set up code or simply check status from anywhere, via mobile app.
- **【3D fingerprint sensor】** Hold the handle and press the fingerprint to unlock it. 100 fingerprints can identify you in less than 1 to 1.5 seconds, and is ideal for children and the elderly.
- **【Battery-powered, external power supply and spare key】**Smart key lock (not included) powered by 4 AA batteries.
- Product Name: Smart Lock.
- Unlock type: Password/Card/Key.
- Size: 220mm* 67.8mm* 79.2mm.
- Power Supply : 4*AA battery.
- Key Quantity: 2pcs.
- Card quantity: 2pcs.

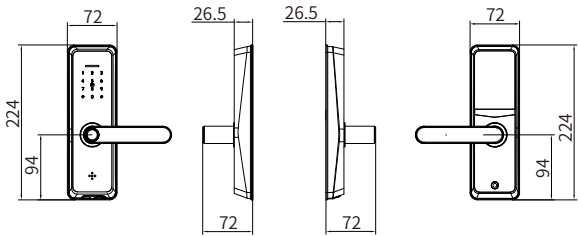
Technical parameter

Bluetooth standard	Bluetooth 4.1ble
Supported mobile phone	Android 4.3 / IOS 7.0 or above
Power supply mode	4 alkaline dry batteries
Low voltage alarm	4.8V
Voltage range	4.5~6V
Standby current	65 microamps
Working current	Less than 200 Ma
Unlocking time	≈ 1.5 seconds
Operating temperature	-20 ~ 70 ° C

Key type	Capacitive touch button
IC cards Capacity	Mifare M1 card 200
Unlocking Ways	App, password, fingerprint, IC card, mechanical key
Fingerprint head type	Semiconductor fingerprint head
Fingerprint capacity	120 pieces
FAR	<0.001%
FRR	<1.0%
Passwords Capacity	Custom and permanent password 150
	Other dynamic passwords 150

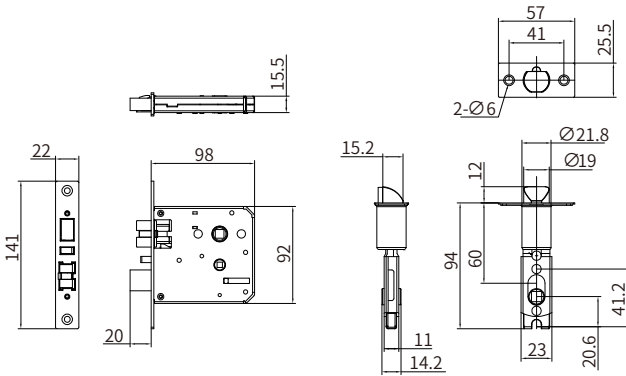
Panel measurement

Unit: mm



Mortise measurement

Unit: mm





Zwave Unlocking Password Unlocking Mechanical Key



Smart Lock—Zwave

Module No.: LS-8015-Zwave



8015-Zwave-BXG(6268)



8015-Zwave-BXG(6226)

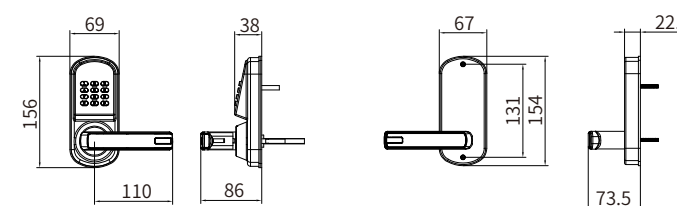
Colour: Silver Black

Description

1. Apartment lock.
2. Best choice for DIY installation, best choice for replacing the knob lock (single latch).
3. Unlocking way: Zwave + code + key.
4. Zinc alloy material.
5. Lift up handle for double lock (9500# mortise only).
6. Self-locking protection.
7. field reversible door lock handle.
8. Sleep mode to prevent illegal attempt.
9. External power poles (available).
10. Low voltage alarm.
11. Powered by 4 x AA Alkaline Battery .
12. Option on single latch mortise or five latch mortise.
13. Powerful code programming function, to set up user code with / without time limit.

Panel measurement

Unit:mm

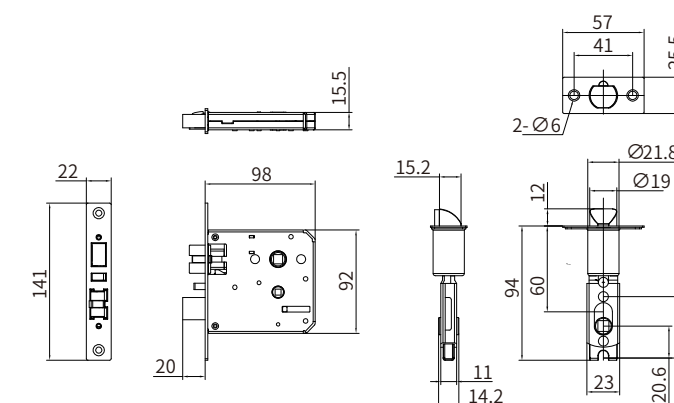


Technical parameter

Model	8015-Zwave	Static current	<30uA
Card capacity	100Pcs	Dynamic current	<200mA
Reading distance	1.5CM	Working temperature	-20°C~55°C
Power Supply	4 xAA	Storage temperature	-30°C~70°C
Low-voltage Index	5.0V(±0.2V)	Working humidity	15%RH~93%RH
Battery life	1 year		

Mortise measurement

Unit:mm



Card Unlocking

Password Unlocking

Mechanical Key



Smart Lock—Digital Lock

Moudle No.: LS-8015-FM



8015-FM-BXG(6268)



8015-FM-BXG(6226)

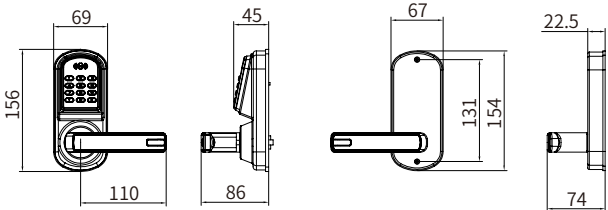
Colour: Silver Dumb black

Description

- 1.Apartment lock.
2. Best choice for DIY installation, best chocie for replacing the knob lock (single latch).
3. Unlocking way: MF card + code +key.
4. Zinc alloy material.
5. Lift up handle for double lock (9500# mortise only).
6. Self-locking protection.
7. field reversiable door lock handle.
8. Sleep mode to prevent illegal attempt.
9. External power poles (avaiable).
10. Low voltage alarm.
11. Powered by 4 x AA Alkaline Battery.
12. Option on single latch mortise or five latch mortise.
13. Powerful code programing function, to set up user code with / without time limit.

Panel measurement

Unit: mm



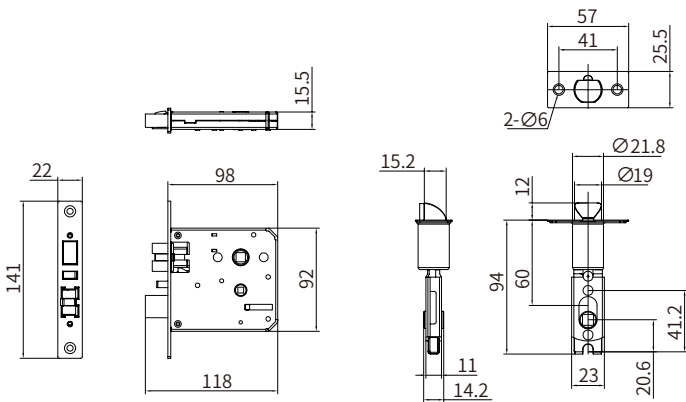
Technical parameter

Model	8015-FM
Card type	Mifare One S50
Card capacity	100Pcs
Code capacity	100Pcs
Card frequency	13.56MHZ
Reading distance	1.5CM
Power Supply	4 xAA
Low-voltageIndex	5.0V(±0.2V)

Battery life	1 year
Static current	<30uA
Dynamic current	<200mA
Workingtemperature	-20°C~55°C
Storage temperature	-30°C~70°C
Working humidity	15%RH~93%RH

Mortise measurement

Unit: mm



GATEWAY G2



Model :	G2
Dimensions :	70mm x 70mm x 26mm
Network :	WiFi 2.4G
IEEE standard :	802.11 b/g/n
Power interface :	Type-C USB
Power input :	DC 5V/500mA

GATEWAY G3



Model :	G3
Dimensions :	70mm x 70mm x 26mm
Network :	RJ45
IEEE standard :	802.3
Power interface :	Type-C USB
Power input :	DC 5V/500mA/PoE(G3P only)

GATEWAY G4



Model :	G4
Dimensions :	110x110x35mm
Network :	4G(TLE)
Power input :	DC 5V/500mA

GATEWAY T2

Product name	BleGateway
Input :	5V---1A(Direct current)
Working temperature	-10°C~55°C
Working humidity	10%~90% RH (no condensation)
Dimensions	80x80x38MM
Wireless technology	Wi-Fi802.11b/g/n BLEMESH(SDG
Radio frequency :	2.400~2.4835GHz
Transmit power	Wi-Fi 21dBmBluetooth 7dBm
Net weight :	349



Technical parameter

Choose the model

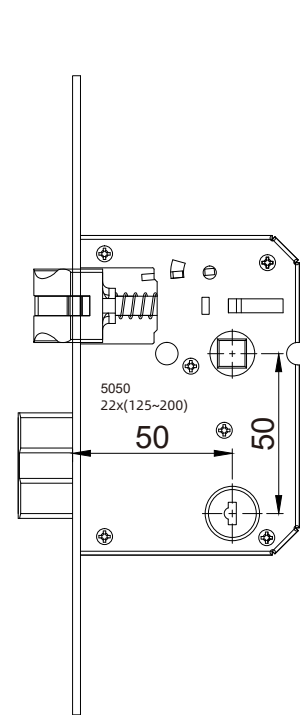
Card type	Picture	Remarks
RFID card		Mifare S50, M1 card, based on 13.56MHZ, with 16 sectors to set different function. use most for hotel lock.
IC card		IC(Integrated Circuit Card), also known as Smart card, Large reading and writing capacity, encryption function, reliable data record, more convenient to use, such as card system, consumption system, attendance system, use most for smart lock.

Specification

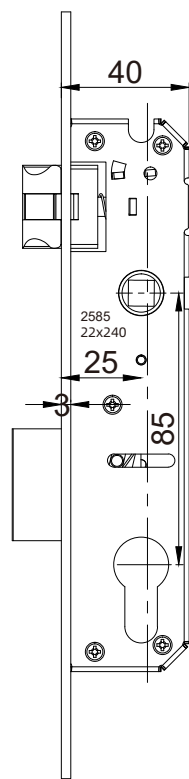
Type of door lock	RFID Sensor card lock		IC card lock	TM card lock	Password lock
Electronic Key	NXP Mifare 1 S50 Mifare® Smart Card	ATMEL T5557 Mifare® Smart Card	Siemens SLE4442 Smart Card	Dallas DS1991L-F5 Smart Card	Max 8 digits user code
International standard	ISO14443-A	ISO11784/785	ISO7816	Dallas Patent Technology	
Encryption type	48 bits proprietary logic encryption card and system data DES encryption	32 bits proprietary logic encryption card and system data DES encryption	System data DES encryption	64 bits proprietary logic encryption card and system data DES encryption	Max 8 digits user code
Static Current	≤25μA	≤15μA	≤10μA	≤5μA	≤10μA
Battery Life	≥10000 times			≥15000 times	≥15000 times
Power Supply	4xAA(6V) / 6xAA(9V)				
Low Voltage Index	5.0 V / 7.2V				
Dynamic Current	≤200mA				
Working temperature	-20°C ~ 55°C				
Reliability	≥30000 times				
Mechanic life	≥100000 times				

Confirm the accessory

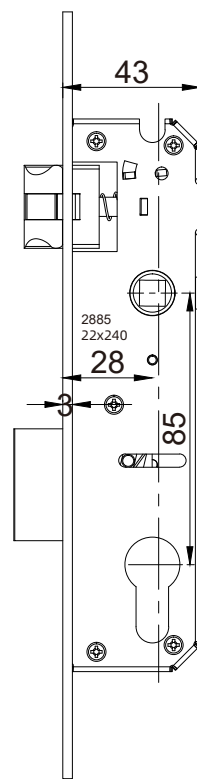
Item	Remarks
Quantity of the door lock	Guest room number+office number, in the same time, let us know the left or the right door.
Quantity of the card	Generally, It is the 3-5 times of the door-locks.
Quantity of the encoder	At least for 2 pcs for each hotel, one for using, the other one for back-up.
Optional accessories	Wall Switch, elevator controller, access controller, in-room safe and fingerprint lock are optional as your service.
Others	If any other special requirements, we can provide tailor-made service to the hotels.



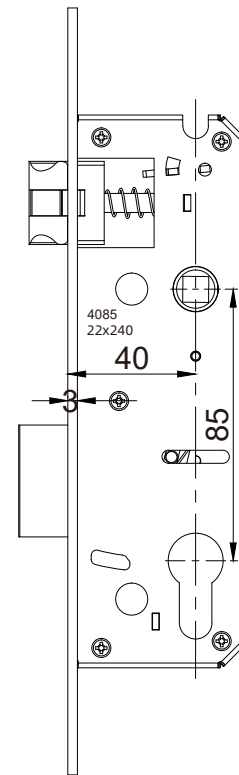
5050



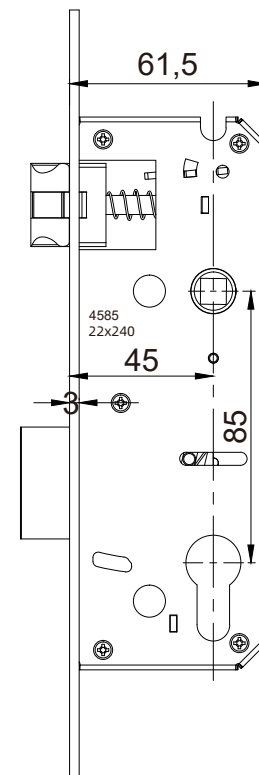
2585



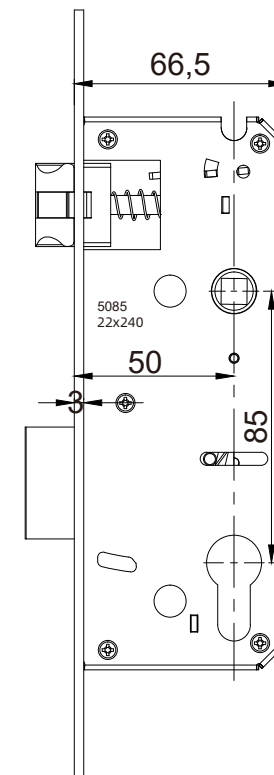
2885



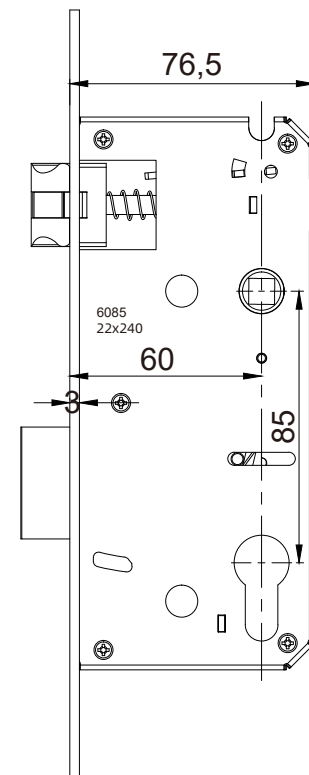
4085



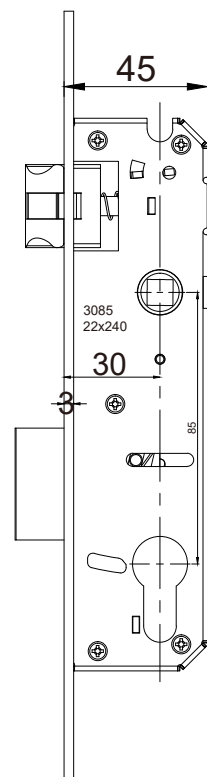
4585



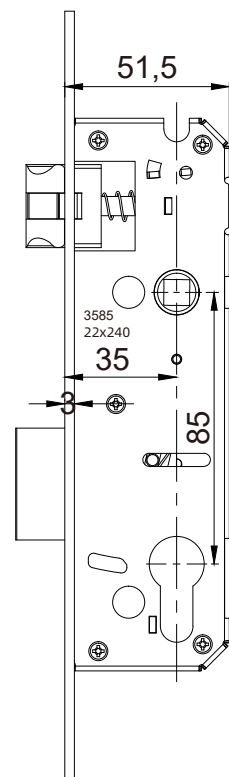
5085



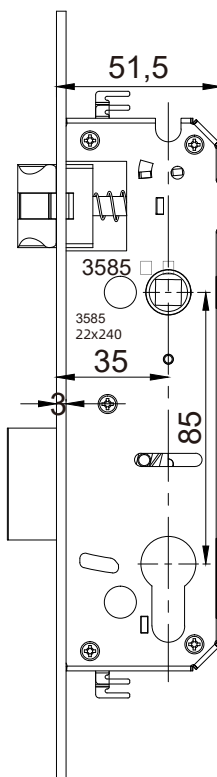
6085



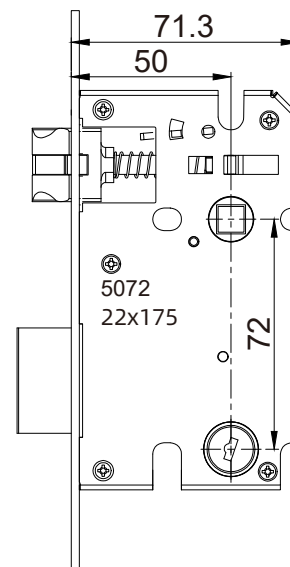
3085



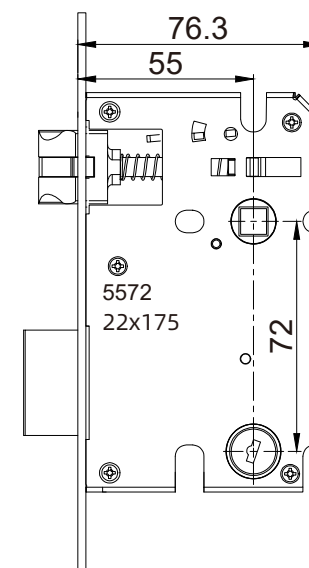
3585



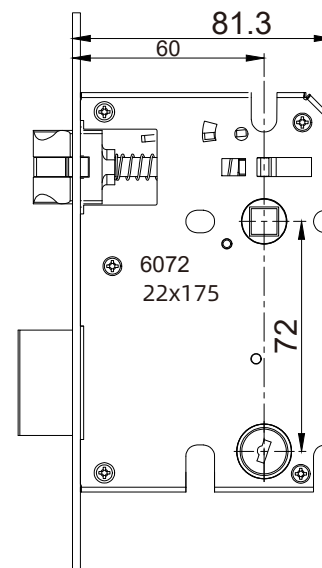
3585



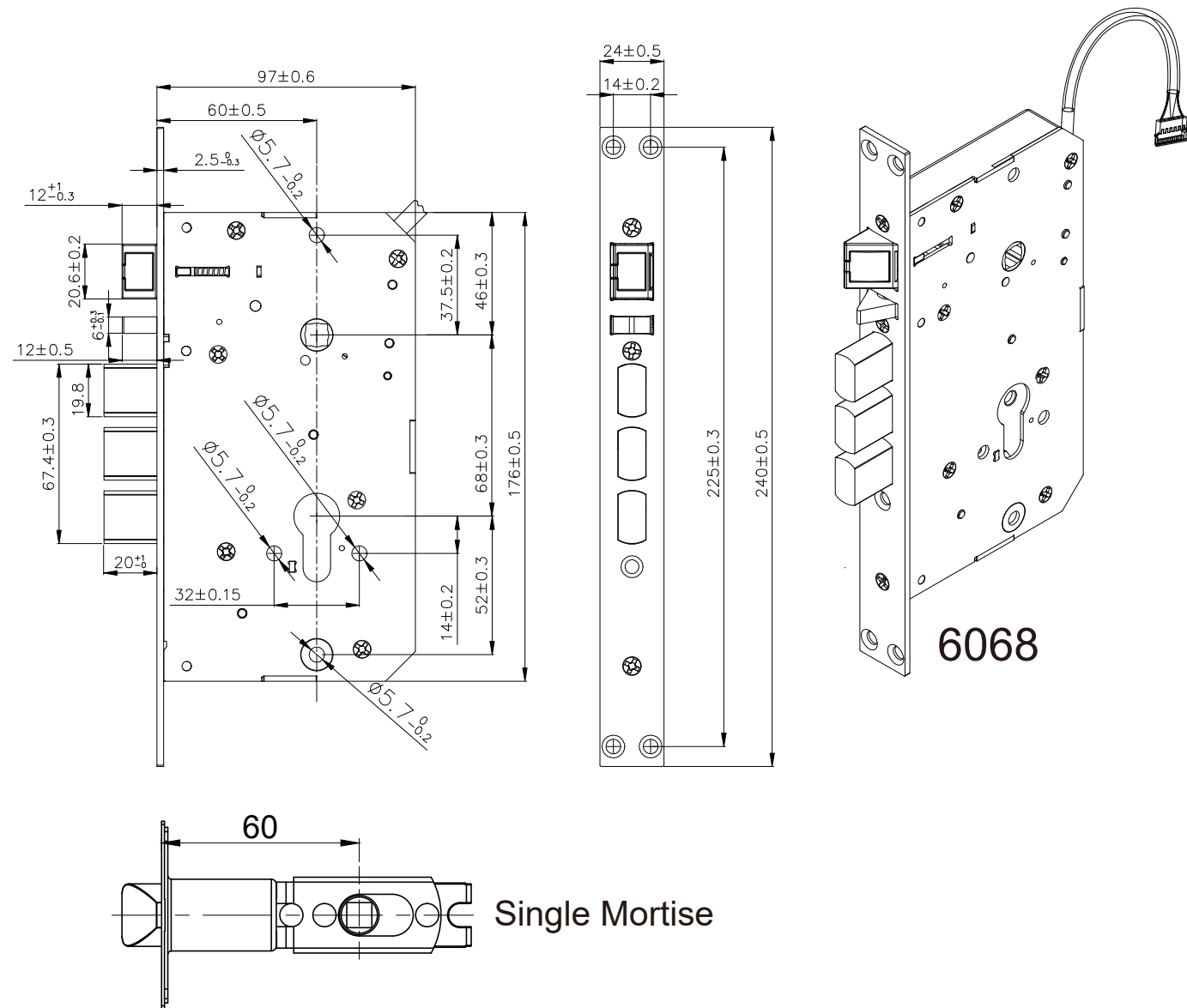
5072



5572



6072

[illegible]

OUR PARTNER



STANLEY

LOTUS

ASSA ABLOY



OUR PROJECTS



vietnam-TTC-hotel



vietnam-Bella-Begonia-hotel



GRAND MERCURE



Saudi-Arabia--Palais-du-Desert



Hilton Hotel



Indonesia-Oakwood



US-Oasis-Hotel-Palm-Spring



US---Hotel-Tucson



US-Days-Inn



US -Motel 6



Asia-vera-Costa-HOTEL



Middle-East---Xafira-Deluxe-Resort-&-Spa



Australia -Ibis



Australia-Best-Western-Lake-Hotel



Zambia -Mika-hotel



Greece-indigo-Mare



Greece---Almyrida-Beach Hotel-1



Morocco-Eden-andalou-suites